

# Quality Products

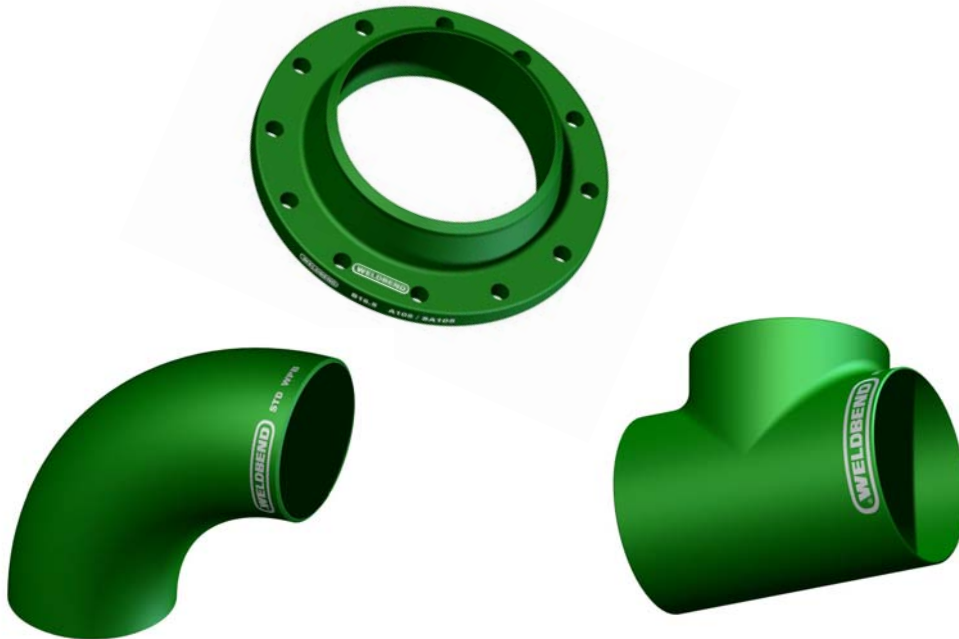
From



“The Industry Standard for Welding Fittings and Flanges”

1/2" THRU 60"

(CARBON STEEL ONLY)



## LIST PRICE SCHEDULE No. 109

Weldbend Corporation  
6600 South Harlem Ave.  
Argo, Illinois 60501-1930

Effective January 5, 2010

Phone: 708/594-1700  
773/582-3500  
Fax: 708/458-0106  
773/582-7621

www.weldbend.com  
e-mail: info@weldbend.com



ISO 9001:2000 Approved

\* Denotes price change

## STANDARD - WELDING FITTINGS

| Size                   | Elbows               |                      |           |                      |           | 180° Return Bends |              | Tees                 |                      | Caps                 | Stub Ends      |
|------------------------|----------------------|----------------------|-----------|----------------------|-----------|-------------------|--------------|----------------------|----------------------|----------------------|----------------|
|                        | Long Radius          | Short Radius         | 3R-90°    | 45°                  | 3R-45°    | Long Radius       | Short Radius | Straight             | Reducing             |                      |                |
| Catalog Page Reference | 22                   | 23                   |           | 25                   |           | 26                | 27           | 28                   | 30-31                | 36                   | 37             |
| 1/2"                   | \$ 16.56             | \$                   | \$        | \$ 17.60             | \$        | \$ 154.60         | \$           | \$ 54.52             | \$                   | \$ 20.36             | \$ 235.71      |
| 3/4"                   | 16.56                |                      |           | 17.60                |           | 154.60            |              | 54.52                | 63.15                | 20.36                | 235.71         |
| 1"                     | 16.56                | 26.57                |           | 17.60                |           | 154.60            |              | 54.52                | 63.15                | 20.36                | 235.71         |
| 1 1/4"                 | 16.56                | 26.57                |           | 17.60                |           | 154.60            | 222.58       | 54.52                | 63.15                | 20.36                | 235.71         |
| 1 1/2"                 | 16.56                | 26.57                |           | 17.60                |           | 154.60            | 222.58       | 54.52                | 63.15                | 20.36                | 235.71         |
| 2"                     | 23.15                | 35.22                | 267.74    | 22.60                | 352.44    | 154.60            | 222.58       | 55.77                | 93.27                | 22.52                | 235.70         |
| 2 1/2"                 | 28.05                | 56.42                | 395.91    | 27.07                | 380.25    | 154.60            | 222.58       | 76.96                | 102.40               | 23.68                | 242.60         |
| 3"                     | 34.24                | 66.20                | 342.75    | 28.05                | 314.38    | 177.03            | 222.58       | 85.77                | 99.79                | 23.68                | 242.60         |
| 3 1/2"                 | 56.42                | 86.75                |           | 50.55                |           |                   | 256.75       | 120.34               | 126.53               | 34.55                | 345.09         |
| 4"                     | 56.42                | 86.75                | 490.15    | 50.55                | 416.78    | 245.36            | 256.75       | 120.34               | 126.53               | 34.55                | 345.09         |
| 5"                     | 121.64               | 257.96               |           | 76.64                |           | 739.88            | 736.43       | 198.61               | 273.29               | 53.19                | 345.09         |
| 6"                     | 124.42               | 229.26               | 874.00    | 99.47                | 653.54    | 570.44            | 661.54       | 206.76               | 258.65               | 59.01                | 657.05         |
| 8"                     | 234.95               | 379.60               | 1,701.03  | 165.67               | 1,191.31  | 1,313.42          | 1,523.24     | 360.69               | 469.28               | 89.29                | 817.52         |
| 10"                    | 467.65               | 777.14               | 3,125.51  | 330.68               | 2,472.95  | 1,976.05          | 1,566.01     | 708.65               | 865.84               | 161.89               | ON APPLICATION |
| 12"                    | 692.67               | 1,085.97             | 4,307.36  | 467.65               | 3,019.85  |                   | 1,633.99     | 991.72               | 1,278.06             | 244.20               |                |
| 14"                    | 999.40               | 1,507.64             | 5,748.80  | 628.75               | 4,160.94  | ON APPLICATION    |              | 1,739.84             | 1,927.68             | 324.95               |                |
| 16"                    | 1,362.85             | 1,824.95             | 7,131.87  | 1,126.74             | 4,965.14  |                   |              | 1,944.97             | 2,036.60             | 378.91               |                |
| 18"                    | 1,803.76             | 2,827.11             | 10,726.01 | 1,593.41             | 8,165.99  |                   |              | 3,354.22             | 3,899.01             | 518.67               |                |
| 20"                    | 2,495.13             | 2,950.06             | 10,993.75 | 1,649.50             | 8,358.72  |                   |              | 4,850.35             | 4,986.01             | 588.55               |                |
| 24"                    | 3,528.59             | 4,539.88             | 15,325.25 | 2,499.69             | 10,876.35 |                   |              | 6,260.15             | 6,917.28             | 800.14               |                |
| 30"                    |                      |                      |           |                      |           |                   |              |                      |                      |                      |                |
| 36"                    |                      |                      |           |                      |           |                   |              |                      |                      |                      |                |
| 42"                    | STOCK                | STOCK                |           | STOCK                |           |                   |              | STOCK                | STOCK                | STOCK                |                |
| 48"                    |                      |                      |           |                      |           |                   |              |                      |                      |                      |                |
| 54"                    | PRICE ON APPLICATION | PRICE ON APPLICATION |           | PRICE ON APPLICATION |           |                   |              | PRICE ON APPLICATION | PRICE ON APPLICATION | PRICE ON APPLICATION |                |
| 60"                    |                      |                      |           |                      |           |                   |              |                      |                      |                      |                |

## EXTRA STRONG - WELDING FITTINGS

| Size                   | Elbows               |                      |           |                      |           | 180° Return Bends |              | Tees                 |                      | Caps                 | Stub Ends      |
|------------------------|----------------------|----------------------|-----------|----------------------|-----------|-------------------|--------------|----------------------|----------------------|----------------------|----------------|
|                        | Long Radius          | Short Radius         | 3R-90°    | 45°                  | 3R-45°    | Long Radius       | Short Radius | Straight             | Reducing             |                      |                |
| Catalog Page Reference | 22                   | 23                   |           | 25                   |           | 26                | 27           | 29                   | 32-33                | 36                   | 37             |
| 1/2"                   | \$ 21.74             | \$                   | \$        | \$ 23.12             | \$        | \$ 195.67         | \$           | \$ 53.83             | \$                   | \$ 25.19             | \$ 267.45      |
| 3/4"                   | 21.74                |                      |           | 23.12                |           |                   |              | 53.83                | 81.79                | 25.19                | 267.45         |
| 1"                     | 21.74                | 52.45                |           | 23.12                |           | 195.67            |              | 53.83                | 81.79                | 25.19                | 267.45         |
| 1 1/4"                 | 21.74                | 52.45                |           | 23.12                |           | 195.67            | 243.29       | 53.83                | 81.79                | 25.19                | 267.45         |
| 1 1/2"                 | 21.74                | 52.45                |           | 23.12                |           | 195.67            | 243.29       | 53.83                | 81.79                | 25.19                | 267.45         |
| 2"                     | 27.76                | 87.35                | 256.98    | 29.05                | 359.71    | 220.13            | 273.70       | 61.34                | 87.74                | 22.52                | 267.45         |
| 2 1/2"                 | 39.06                | 87.35                | 457.87    | 64.56                | 380.25    | 220.13            | 273.70       | 102.10               | 95.26                | 31.06                | 257.09         |
| 3"                     | 50.04                | 87.35                | 376.01    | 37.45                | 318.29    | 319.90            | 363.38       | 95.12                | 110.65               | 34.55                | 295.05         |
| 3 1/2"                 | 82.32                | 143.64               |           | 59.08                |           | 395.99            | 619.22       | 153.74               | 164.61               | 46.98                | 389.61         |
| 4"                     | 82.32                | 143.64               | 653.54    | 59.08                | 557.01    | 395.99            | 619.22       | 153.74               | 164.61               | 46.98                | 389.61         |
| 5"                     | 196.60               | 322.62               |           | 140.43               |           | 930.58            | 1,094.42     | 335.04               | 485.22               | 76.87                | 389.62         |
| 6"                     | 208.22               | 334.65               | 1,140.76  | 161.73               | 825.08    | 1,094.42          | 1,140.61     | 294.40               | 304.76               | 95.50                | 1,285.12       |
| 8"                     | 395.78               | 715.89               | 2,191.51  | 279.57               | 1,460.35  | 2,153.11          | 2,669.46     | 582.66               | 606.41               | 143.26               |                |
| 10"                    | 834.82               | 1,079.27             | 4,751.21  | 538.47               | 3,176.71  |                   | 2,847.06     | 868.47               | 1,049.77             | 220.13               | ON APPLICATION |
| 12"                    | 1,023.03             | 1,289.69             | 4,967.32  | 798.67               | 4,239.53  |                   | 2,941.18     | 1,263.68             | 1,684.91             | 294.28               |                |
| 14"                    | 1,418.16             | 1,856.90             | 5,228.76  | 1,008.50             | 4,431.37  | ON APPLICATION    |              | 2,399.25             | 2,582.49             | 446.46               |                |
| 16"                    | 1,788.12             | 2,248.23             | 8,708.47  | 1,225.12             | 6,666.64  |                   |              | 2,276.96             | 3,300.89             | 512.07               |                |
| 18"                    | 2,341.44             | 2,934.62             | 12,926.80 | 1,842.68             | 9,019.58  |                   |              | 4,811.70             | 4,749.97             | 692.60               |                |
| 20"                    | 3,337.67             | 3,581.02             | 12,679.08 | 2,193.26             | 8,825.49  |                   |              | 5,259.44             | 5,514.00             | 732.97               |                |
| 24"                    | 5,431.18             | 5,481.78             | 16,286.14 | 3,680.19             | 12,746.41 |                   |              | 7,080.83             | 6,898.43             | 1,043.95             |                |
| 30"                    |                      |                      |           |                      |           |                   |              |                      |                      |                      |                |
| 36"                    |                      |                      |           |                      |           |                   |              |                      |                      |                      |                |
| 42"                    | STOCK                | STOCK                |           | STOCK                |           |                   |              | STOCK                | STOCK                | STOCK                |                |
| 48"                    |                      |                      |           |                      |           |                   |              |                      |                      |                      |                |
| 54"                    | PRICE ON APPLICATION | PRICE ON APPLICATION |           | PRICE ON APPLICATION |           |                   |              | PRICE ON APPLICATION | PRICE ON APPLICATION | PRICE ON APPLICATION |                |
| 60"                    |                      |                      |           |                      |           |                   |              |                      |                      |                      |                |

NOTE: PRICE SHEET 109

ALL PRICES ARE  
BASED ON ORDERS  
OF APPROXIMATELY  
EQUAL AMOUNTS OF  
FITTINGS AND FLANGES  
PAGE 2



\* Denotes price change



PHONE: 708/594-1700

773/582-3500

FAX: 708/458-0106

773/582-7621

www.WELDBEND.com

e-mail: info@weldbend.com

## WELDING REDUCERS

| Size                   | STANDARD   |           | EXTRA STRONG |           | XXS & SCH-160 |           |
|------------------------|------------|-----------|--------------|-----------|---------------|-----------|
|                        | Concentric | Eccentric | Concentric   | Eccentric | Concentric    | Eccentric |
| Catalog Page Reference | 34         | 34        | 35           | 35        |               |           |
| 3/4 x 1/2"             | \$ 54.75   | \$ 74.15  | \$ 39.97     | \$ 68.45  | \$            | \$        |
| 1 x 1/2"               | 54.75      | 74.15     | 39.97        | 68.45     |               |           |
| 1 x 3/4"               | 54.75      | 74.15     | 39.97        | 68.45     |               |           |
| 1 1/4 x 1/2"           | 54.75      | 74.15     | 39.97        | 68.45     |               |           |
| 1 1/4 x 3/4"           | 54.75      | 74.15     | 39.97        | 68.45     |               |           |
| 1 1/4 x 1"             | 54.75      | 74.15     | 39.97        | 68.45     |               |           |
| 1 1/2 x 1/2"           | 54.75      | 74.15     | 39.97        | 68.45     |               |           |
| 1 1/2 x 3/4"           | 54.75      | 74.15     | 39.97        | 68.45     |               |           |
| 1 1/2 x 1"             | 54.75      | 74.15     | 39.97        | 68.45     |               |           |
| 1 1/2 x 1 1/4"         | 54.75      | 74.15     | 39.97        | 68.45     |               |           |
| 2 x 1/2"               | 253.21     | 352.98    | 253.21       | 519.18    |               |           |
| 2 x 3/4"               | 75.01      | 207.06    | 107.35       | 386.27    |               |           |
| 2 x 1"                 | 48.51      | 72.76     | 48.96        | 93.87     |               |           |
| 2 x 1 1/4"             | 35.03      | 72.76     | 47.16        | 108.25    |               |           |
| 2 x 1 1/2"             | 35.03      | 44.92     | 39.08        | 49.41     |               |           |
| 2 1/2 x 3/4"           | 451.66     | 630.33    | 416.02       | 631.09    |               |           |
| 2 1/2 x 1"             | 90.73      | 259.16    | 116.33       | 265.00    |               |           |
| 2 1/2 x 1 1/4"         | 76.36      | 110.49    | 81.75        | 118.13    |               |           |
| 2 1/2 x 1 1/2"         | 57.04      | 61.08     | 53.45        | 74.11     |               |           |
| 2 1/2 x 2"             | 44.02      | 52.10     | 53.45        | 74.11     |               |           |
| 3 x 1"                 | 89.38      | 291.95    | 111.39       | 339.11    |               |           |
| 3 x 1 1/4"             | 70.97      | 250.63    | 88.48        | 280.27    |               |           |
| 3 x 1 1/2"             | 44.92      | 69.62     | 59.74        | 101.96    |               |           |
| 3 x 2"                 | 39.08      | 61.08     | 44.92        | 61.08     |               |           |
| 3 x 2 1/2"             | 36.38      | 57.04     | 44.92        | 61.08     |               |           |
| 3 1/2 x 1 1/4"         | 218.97     | 390.99    | 334.08       | 390.80    |               |           |
| 3 1/2 x 1 1/2"         | 201.70     | 365.60    | 295.70       | 365.60    |               |           |
| 3 1/2 x 2"             | 97.47      | 109.59    | 118.13       | 147.77    |               |           |
| 3 1/2 x 2 1/2"         | 93.87      | 102.41    | 156.75       | 141.03    |               |           |
| 3 1/2 x 3"             | 93.87      | 97.47     | 156.75       | 122.62    |               |           |
| 4 x 1"                 | 151.28     | 624.02    | 182.78       | 807.53    |               |           |
| 4 x 1 1/4"             | 151.28     | 624.02    | 182.78       | 807.53    |               |           |
| 4 x 1 1/2"             | 102.86     | 304.97    | 110.49       | 490.48    |               |           |
| 4 x 2"                 | 57.04      | 90.73     | 75.46        | 131.15    |               |           |
| 4 x 2 1/2"             | 57.04      | 78.60     | 67.82        | 99.26     |               |           |
| 4 x 3"                 | 46.71      | 74.56     | 57.49        | 95.67     |               |           |
| 4 x 3 1/2"             | 48.96      | 74.56     | 59.74        | 95.67     |               |           |
| 5 x 2"                 | 180.11     | 557.40    | 442.42       | 1,040.69  |               |           |
| 5 x 2 1/2"             | 180.11     | 235.36    | 212.90       | 306.77    |               |           |
| 5 x 3"                 | 118.13     | 150.47    | 178.31       | 276.23    |               |           |
| 5 x 3 1/2"             | 107.16     | 163.88    | 126.06       | 220.60    |               |           |
| 5 x 4"                 | 86.69      | 150.47    | 122.62       | 221.43    |               |           |
| 6 x 2"                 | 295.54     | 531.80    | 367.86       | 687.20    |               |           |
| 6 x 2 1/2"             | 235.81     | 414.57    | 432.53       | 495.86    |               |           |
| 6 x 3"                 | 118.58     | 240.75    | 161.25       | 269.04    |               |           |
| 6 x 3 1/2"             | 163.49     | 327.76    | 215.14       | 441.24    |               |           |
| 6 x 4"                 | 97.92      | 153.61    | 137.89       | 207.06    |               |           |
| 6 x 5"                 | 87.58      | 110.49    | 133.85       | 254.67    |               |           |
| 8 x 3"                 | 360.22     | 609.50    | 592.43       | 767.15    |               |           |
| 8 x 3 1/2"             | 466.44     | 850.93    | 743.79       | 1,008.53  |               |           |
| 8 x 4"                 | 165.29     | 357.97    | 229.07       | 406.03    |               |           |

| Size                   | STANDARD             |                      | EXTRA STRONG         |                      |
|------------------------|----------------------|----------------------|----------------------|----------------------|
|                        | Concentric           | Eccentric            | Concentric           | Eccentric            |
| Catalog Page Reference | 34                   | 34                   | 35                   | 35                   |
| 8 x 5"                 | \$144.63             | \$ 254.22            | \$ 229.07            | \$ 332.37            |
| 8 x 6"                 | 128.46               | 195.83               | 187.75               | 291.05               |
| 10 x 4"                | 426.25               | 707.87               | 610.85               | 975.11               |
| 10 x 5"                | 341.36               | 541.68               | 446.46               | 768.05               |
| 10 x 6"                | 234.01               | 451.40               | 321.14               | 689.90               |
| 10 x 8"                | 249.28               | 256.47               | 269.04               | 471.61               |
| 12 x 4"                | 861.03               | 2,269.19             | 1,386.98             | 1,893.12             |
| 12 x 5"                | 1,030.61             | 1,763.44             | 1,490.19             | 1,780.85             |
| 12 x 6"                | 371.00               | 1,012.84             | 480.14               | 1,019.13             |
| 12 x 8"                | 354.38               | 627.92               | 446.46               | 876.30               |
| 12 x 10"               | 308.12               | 400.20               | 439.27               | 674.63               |
| 14 x 6"                | 1,357.89             | 2,017.99             | 2,538.64             | 2,898.03             |
| 14 x 8"                | 783.32               | 1,210.92             | 1,302.54             | 2,050.83             |
| 14 x 10"               | 634.65               | 822.40               | 704.27               | 1,638.96             |
| 14 x 12"               | 463.53               | 702.48               | 704.27               | 1,539.70             |
| 16 x 6"                | 2,353.67             | 3,883.50             | 4,303.47             | 9,543.42             |
| 16 x 8"                | 1,179.92             | 3,113.08             | 1,889.59             | 7,139.74             |
| 16 x 10"               | 896.51               | 1,564.85             | 1,438.19             | 2,096.20             |
| 16 x 12"               | 811.17               | 1,427.41             | 1,001.61             | 1,916.98             |
| 16 x 14"               | 811.17               | 1,074.37             | 987.69               | 1,500.17             |
| 18 x 8"                | 4,310.43             | 4,706.88             | 7,033.17             | 6,554.61             |
| 18 x 10"               | 1,445.82             | 2,394.43             | 2,453.72             | 3,975.00             |
| 18 x 12"               | 1,196.54             | 2,120.90             | 1,888.24             | 2,579.93             |
| 18 x 14"               | 1,104.92             | 2,000.08             | 1,675.34             | 1,477.07             |
| 18 x 16"               | 886.18               | 1,935.40             | 1,381.59             | 2,407.01             |
| 20 x 10"               | 2,596.10             | 8,551.46             | 2,688.63             | 11,404.12            |
| 20 x 12"               | 1,952.92             | 6,710.79             | 2,409.26             | 8,430.60             |
| 20 x 14"               | 1,583.26             | 5,483.71             | 2,091.71             | 6,238.29             |
| 20 x 16"               | 1,520.83             | 2,424.53             | 1,790.77             | 3,463.87             |
| 20 x 18"               | 1,520.83             | 2,430.82             | 1,838.38             | 2,593.41             |
| 24 x 10"               | 6,562.57             | 12,259.92            | 7,079.77             | 15,961.88            |
| 24 x 12"               | 3,952.55             | 10,891.94            | 6,059.52             | 11,974.65            |
| 24 x 14"               | 3,603.55             | 8,487.64             | 6,039.76             | 10,690.94            |
| 24 x 16"               | 1,835.69             | 5,281.14             | 5,082.61             | 8,030.41             |
| 24 x 18"               | 1,759.33             | 3,503.84             | 5,082.61             | 6,645.67             |
| 24 x 20"               | 1,720.26             | 3,187.19             | 4,622.68             | 5,634.17             |
| 30 x 16"               | STOCK                | STOCK                | STOCK                | STOCK                |
| 30 x 18"               | STOCK                | STOCK                | STOCK                | STOCK                |
| 30 x 20"               | PRICE ON APPLICATION | PRICE ON APPLICATION | PRICE ON APPLICATION | PRICE ON APPLICATION |
| 30 x 24"               | PRICE ON APPLICATION | PRICE ON APPLICATION | PRICE ON APPLICATION | PRICE ON APPLICATION |
| 36 x 18"               | STOCK                | STOCK                | STOCK                | STOCK                |
| 36 x 20"               | STOCK                | STOCK                | STOCK                | STOCK                |
| 36 x 24"               | PRICE ON APPLICATION | PRICE ON APPLICATION | PRICE ON APPLICATION | PRICE ON APPLICATION |
| 36 x 30"               | PRICE ON APPLICATION | PRICE ON APPLICATION | PRICE ON APPLICATION | PRICE ON APPLICATION |
| 42 x 24"               | STOCK                | STOCK                | PRICE ON APPLICATION | PRICE ON APPLICATION |
| 42 x 30"               | STOCK                | STOCK                | PRICE ON APPLICATION | PRICE ON APPLICATION |
| 42 x 36"               | PRICE ON APPLICATION | PRICE ON APPLICATION |                      |                      |
| 48 x 24"               |                      |                      |                      |                      |
| 48 x 30"               |                      |                      |                      |                      |
| 48 x 36"               | STOCK                | STOCK                | PRICE ON APPLICATION | PRICE ON APPLICATION |
| 48 x 42"               | PRICE ON APPLICATION | PRICE ON APPLICATION |                      |                      |

NOTE: PRICE SHEET 109  
ALL PRICES ARE  
BASED ON ORDERS  
OF APPROXIMATELY  
EQUAL AMOUNTS OF  
FITTINGS AND FLANGES  
PAGE 3



PHONE: 708/594-1700  
773/582-3500  
FAX: 708/458-0106  
773/582-7621  
www.WELDBEND.com  
e-mail: info@weldbend.com

## TRUE SCHEDULE - 80 - WELDING FITTINGS

| Size | Elbows               |                      |                      | Tees                 |                      | Caps |
|------|----------------------|----------------------|----------------------|----------------------|----------------------|------|
|      | Long Radius          | Short Radius         | 45°                  | Straight             | Reducing             |      |
|      | PRICE ON APPLICATION | PRICE ON APPLICATION | PRICE ON APPLICATION | PRICE ON APPLICATION | PRICE ON APPLICATION |      |
|      | \$                   | \$                   | \$                   | \$                   | \$                   | \$   |
| 10"  | STOCK                | STOCK                | STOCK                | STOCK                | STOCK                |      |
| 12"  | STOCK                | STOCK                | STOCK                | STOCK                | STOCK                |      |
| 14"  | STOCK                | STOCK                | STOCK                | STOCK                | STOCK                |      |
| 16"  | STOCK                | STOCK                | STOCK                | STOCK                | STOCK                |      |
| 18"  | STOCK                | STOCK                | STOCK                | STOCK                | STOCK                |      |
| 20"  | STOCK                | STOCK                | STOCK                | STOCK                | STOCK                |      |
| 24"  | STOCK                | STOCK                | STOCK                | STOCK                | STOCK                |      |

## DOUBLE EXTRA STRONG & SCHEDULE 160 WELDING FITTINGS

| Size   | Tees-Straight |          | Tees-Reducing        |                      | Long Radius          |                      | Elbows               |                      | 45°                  |                      | Caps                 |                      |
|--------|---------------|----------|----------------------|----------------------|----------------------|----------------------|----------------------|----------------------|----------------------|----------------------|----------------------|----------------------|
|        | XXS           | SCH-160  | XXS                  | SCH-160              | XXS                  | SCH-160              | Short Radius         |                      | XXS                  | SCH-160              | XXS                  | SCH-160              |
|        |               |          |                      |                      |                      |                      |                      |                      |                      |                      |                      |                      |
| 1/2"   | \$ 131.67     | \$       | \$                   | \$                   | \$                   | \$                   | \$                   | \$                   | \$                   | \$                   | \$                   | \$                   |
| 3/4"   | 131.67        |          |                      |                      |                      |                      |                      |                      |                      |                      |                      |                      |
| 1"     | 131.67        | 131.67   | PRICE ON APPLICATION | PRICE ON APPLICATION | PRICE ON APPLICATION | PRICE ON APPLICATION | PRICE ON APPLICATION | PRICE ON APPLICATION | PRICE ON APPLICATION | PRICE ON APPLICATION | PRICE ON APPLICATION | PRICE ON APPLICATION |
| 1 1/4" | 131.67        | 131.67   |                      |                      |                      |                      |                      |                      |                      |                      |                      |                      |
| 1 1/2" | 131.67        | 131.67   |                      |                      |                      |                      |                      |                      |                      |                      |                      |                      |
| 2"     | 304.76        | 274.09   |                      |                      | 218.96               | 173.15               |                      |                      | 192.56               | 163.44               |                      |                      |
| 2 1/2" | 716.28        | 473.25   |                      |                      | 249.63               | 214.30               |                      |                      | 224.78               | 192.56               |                      |                      |
| 3"     | 856.43        | 584.28   | PRICE ON APPLICATION | PRICE ON APPLICATION | 356.01               | 204.21               | PRICE ON APPLICATION | PRICE ON APPLICATION | 329.99               | 179.36               | PRICE ON APPLICATION | PRICE ON APPLICATION |
| 4"     | 1,450.03      | 752.00   |                      |                      | 466.65               | 335.82               |                      |                      | 416.57               | 279.52               |                      |                      |
| 5"     |               |          |                      |                      | 1,418.59             | 949.61               |                      |                      | 822.66               | 748.12               |                      |                      |
| 6"     | 3,483.57      | 3,350.80 |                      |                      | 1,368.50             | 861.87               |                      |                      | 954.27               | 608.74               |                      |                      |
| 8"     |               |          |                      |                      |                      |                      |                      |                      |                      |                      |                      |                      |

## Y52 STANDARD - WELDING FITTINGS

| Size   | Elbows               |                      |                      | Tees                 |                      | Reducers             |           |
|--------|----------------------|----------------------|----------------------|----------------------|----------------------|----------------------|-----------|
|        | Long Radius          | Short Radius         | 45°                  | Straight             | Reducing             | Concentric           | Eccentric |
|        | PRICE ON APPLICATION | PRICE ON APPLICATION | PRICE ON APPLICATION | PRICE ON APPLICATION | PRICE ON APPLICATION | PRICE ON APPLICATION |           |
| 2"     | \$ STOCK             | \$ STOCK             | \$ STOCK             | \$ STOCK             | \$ STOCK             | \$ STOCK             |           |
| 2 1/2" | STOCK                | STOCK                | STOCK                | STOCK                | STOCK                | STOCK                |           |
| 3"     | STOCK                | STOCK                | STOCK                | STOCK                | STOCK                | STOCK                |           |
| 4"     | STOCK                | STOCK                | STOCK                | STOCK                | STOCK                | STOCK                |           |
| 5"     | STOCK                | STOCK                | STOCK                | STOCK                | STOCK                | STOCK                |           |
| 6"     | STOCK                | STOCK                | STOCK                | STOCK                | STOCK                | STOCK                |           |
| 8"     | STOCK                | STOCK                | STOCK                | STOCK                | STOCK                | STOCK                |           |
| 10"    | STOCK                | STOCK                | STOCK                | STOCK                | STOCK                | STOCK                |           |
| 12"    | STOCK                | STOCK                | STOCK                | STOCK                | STOCK                | STOCK                |           |

NOTE: PRICE SHEET 109  
 ALL PRICES ARE  
 BASED ON ORDERS  
 OF APPROXIMATELY  
 EQUAL AMOUNTS OF  
 FITTINGS AND FLANGES  
 PAGE 4



PHONE: 708/594-1700  
 773/582-3500  
 FAX: 708/458-0106  
 773/582-7621  
 www.WELDBEND.com  
 e-mail: info@weldbend.com

## Y52 EXTRA STRONG - WELDING FITTINGS

| Size | Elbows               |                      |                      | Tees                 |                      | Reducers             |                      |
|------|----------------------|----------------------|----------------------|----------------------|----------------------|----------------------|----------------------|
|      | Long Radius          | Short Radius         | 45°                  | Straight             | Reducing             | Concentric           | Eccentric            |
|      | PRICE ON APPLICATION | PRICE ON APPLICATION | PRICE ON APPLICATION | PRICE ON APPLICATION | PRICE ON APPLICATION | PRICE ON APPLICATION | PRICE ON APPLICATION |
| 2"   | \$ STOCK             | \$ STOCK             | \$ STOCK             | \$ STOCK             | \$ STOCK             | \$ STOCK             |                      |
| 2½"  | STOCK                | STOCK                | STOCK                | STOCK                | STOCK                | STOCK                |                      |
| 3"   | STOCK                | STOCK                | STOCK                | STOCK                | STOCK                | STOCK                |                      |
| 4"   | STOCK                | STOCK                | STOCK                | STOCK                | STOCK                | STOCK                |                      |
| 5"   | STOCK                | STOCK                | STOCK                | STOCK                | STOCK                | STOCK                |                      |
| 6"   | STOCK                | STOCK                | STOCK                | STOCK                | STOCK                | STOCK                |                      |
| 8"   | STOCK                | STOCK                | STOCK                | STOCK                | STOCK                | STOCK                |                      |
| 10"  | STOCK                | STOCK                | STOCK                | STOCK                | STOCK                | STOCK                |                      |
| 12"  | STOCK                | STOCK                | STOCK                | STOCK                | STOCK                | STOCK                |                      |



## CLASS 150 FLANGES - RAISED OR FLAT FACE

| Size                   | Slip-On              |          | Welding-Neck         |               | Blind                | Threaded       |          | Socket-Weld    |               | Lap Joint |
|------------------------|----------------------|----------|----------------------|---------------|----------------------|----------------|----------|----------------|---------------|-----------|
|                        |                      | Reducing | STD & XS             | XXS & SCH-160 |                      |                | Reducing | STD & XS       | XXS & SCH-160 |           |
| Catalog Page Reference | 41                   |          | 41                   |               | 41                   | 41/46          |          |                |               | 41        |
| ½"                     | \$ 20.59             | \$       | \$ 30.11             | \$ 45.84      | \$ 24.71             | \$ 31.02       | \$       | \$ 27.18       | \$ 36.78      | \$ 21.69  |
| ¾"                     | 20.59                |          | 30.11                | 45.84         | 24.71                | 31.02          |          | 27.18          | 36.78         | 21.69     |
| 1"                     | 20.59                | 66.71    | 30.11                | 45.84         | 24.71                | 31.02          | 86.75    | 27.18          | 36.78         | 21.69     |
| 1¼"                    | 20.59                | 66.71    | 30.11                | 45.84         | 24.71                | 31.02          | 86.75    | 27.18          | 36.78         | 21.69     |
| 1½"                    | 20.59                | 66.71    | 30.11                | 45.84         | 24.71                | 31.02          | 86.75    | 27.18          | 36.78         | 21.69     |
| 2"                     | 22.88                | 74.65    | 34.48                | 49.02         | 27.58                | 34.75          | 97.07    | 29.93          | 41.16         | 24.18     |
| 2½"                    | 39.16                | 104.14   | 37.49                | 52.26         | 41.96                | 42.59          | 113.97   | 40.21          | 59.90         | 38.93     |
| 3"                     | 31.08                | 78.95    | 40.92                | 63.90         | 35.16                | 42.85          | 103.22   | 38.14          | 54.37         | 32.92     |
| 3½"                    | 38.95                |          | 49.67                |               | 49.28                | 49.80          |          |                |               | 40.39     |
| 4"                     | 38.95                | 84.47    | 49.67                | 121.95        | 49.28                | 49.80          | 109.36   | 49.65          |               | 40.39     |
| 5"                     | 67.84                | 206.12   | 78.43                | 217.73        | 64.81                | 78.38          | 249.44   | need           |               | 63.40     |
| 6"                     | 64.05                | 229.18   | 75.03                | 242.07        | 75.03                | 86.14          | 249.44   | 81.18          |               | 67.84     |
| 8"                     | 97.25                | 288.44   | 132.55               |               | 123.11               | 147.84         | 436.52   | 116.99         |               | 107.56    |
| 10"                    | 167.84               | 438.41   | 212.29               |               | 237.10               | 268.71         | 627.90   |                |               | 169.93    |
| 12"                    | 248.89               | 681.33   | 308.50               |               | 357.10               | 375.03         | 869.49   | 222.60         |               | 311.61    |
| 14"                    | 330.69               |          | 444.71               |               | 591.37               |                |          |                |               | 664.29    |
| 16"                    | 516.99               |          | 668.63               |               | 872.81               |                |          |                |               | 867.15    |
| 18"                    | 642.35               |          | 941.05               |               | 1,183.27             | ON APPLICATION |          | ON APPLICATION |               | 987.82    |
| 20"                    | 734.41               |          | 1,147.06             |               | 1,487.35             |                |          |                |               | 1,113.55  |
| 24"                    | 1,061.31             |          | 1,542.48             |               | 2,052.94             |                |          |                |               | 1,333.44  |
| *30" 0                 |                      |          |                      |               |                      |                |          |                |               |           |
| *36" 0                 | *STOCK               |          | *STOCK               |               | *STOCK               |                |          |                |               |           |
| *42" 0                 |                      |          |                      |               |                      |                |          |                |               |           |
| *48" 0                 | PRICE ON APPLICATION |          | PRICE ON APPLICATION |               | PRICE ON APPLICATION |                |          |                |               |           |
| *54" 0                 |                      |          | Series "A" "B"       |               | Series "A" "B"       |                |          |                |               |           |
| *60" 0                 |                      |          |                      |               |                      |                |          |                |               |           |

\* Class 125 °Series A and B

NOTE: PRICE SHEET 109

ALL PRICES ARE  
BASED ON ORDERS  
OF APPROXIMATELY  
EQUAL AMOUNTS OF  
FITTINGS AND FLANGES  
PAGE 5



PHONE: 708/594-1700

773/582-3500

FAX: 708/458-0106

773/582-7621

www.WELDBEND.com

e-mail: info@weldbend.com

## CLASS 300 FLANGES - RAISED OR FLAT FACE

| Size                   | Slip-On  |        | Welding-Neck         |               | Blind                | Threaded |                | Socket-Weld    |               | Lap Joint      |
|------------------------|----------|--------|----------------------|---------------|----------------------|----------|----------------|----------------|---------------|----------------|
|                        | Reducing |        | STD & XS             | XXS & SCH-160 |                      | Reducing |                | STD & XS       | XXS & SCH-160 |                |
| Catalog Page Reference | 43       |        | 43                   |               | 43                   | 43/46    |                |                |               | 43             |
| 1/2"                   | \$ 27.45 | \$     | \$ 36.24             | \$ 51.88      | \$ 32.12             | \$ 34.31 | \$             | \$ 34.31       | \$ 44.20      | \$ 29.92       |
| 3/4"                   | 27.45    |        | 36.24                | 51.88         | 32.12                | 34.31    |                | 34.31          | 44.20         | 29.92          |
| 1"                     | 27.45    | 119.14 | 36.24                | 51.88         | 32.12                | 34.31    | 133.41         | 34.31          | 44.20         | 29.92          |
| 1 1/4"                 | 27.45    | 119.14 | 36.24                | 51.88         | 32.12                | 34.31    | 133.41         | 34.31          | 44.20         | 29.92          |
| 1 1/2"                 | 27.45    | 119.14 | 36.24                | 51.88         | 32.12                | 34.31    | 133.41         | 34.31          | 44.20         | 29.92          |
| 2"                     | 36.47    | 119.14 | 45.10                | 54.08         | 35.95                | 39.87    | 133.41         | 39.08          | 50.51         | 34.38          |
| 2 1/2"                 | 41.18    |        | 51.63                | 54.09         | 63.14                | 55.82    |                | 47.22          | 43.82         | 49.54          |
| 3"                     | 44.84    | 164.98 | 52.16                | 69.45         | 51.22                | 59.48    | 197.37         | 62.09          | 64.89         | 51.63          |
| 3 1/2"                 | 64.58    |        | 85.75                |               | 81.57                | 85.62    |                |                |               | 78.41          |
| 4"                     | 64.58    |        | 85.75                | 112.55        | 81.57                | 85.62    |                | 101.26         | 101.55        | 78.41          |
| 5"                     | 112.05   |        | 130.59               | 158.35        | 141.44               | 129.10   |                | 129.10         | 134.54        | 130.59         |
| 6"                     | 112.39   |        | 133.33               | 231.41        | 143.01               | 160.26   |                |                | 164.29        | 140.52         |
| 8"                     | 191.87   |        | 229.80               |               | 221.41               | 296.30   |                |                |               | 235.27         |
| 10"                    | 327.32   |        | 415.95               |               | 441.28               | 308.83   |                | ON APPLICATION |               | 363.69         |
| 12"                    | 402.54   |        | 534.88               |               | 637.52               | 373.61   |                |                |               | 513.25         |
| 14"                    | 1,002.98 |        | 1,150.20             |               | 1,309.57             |          |                |                |               |                |
| 16"                    | 1,102.88 |        | 1,361.80             |               | 1,750.56             |          |                |                |               |                |
| 18"                    | 1,372.21 |        | 1,734.85             |               | 2,274.90             |          |                |                |               |                |
| 20"                    | 1,520.55 |        | 2,167.32             |               | 2,616.34             |          | ON APPLICATION |                |               | ON APPLICATION |
| 24"                    | 2,403.66 |        | 2,992.42             |               | 3,918.80             |          |                |                |               |                |
| 30"                    |          |        | °STOCK               |               | °STOCK               |          |                |                |               |                |
| 36"                    |          |        |                      |               |                      |          |                |                |               |                |
| 42"                    |          |        | PRICE ON APPLICATION |               | PRICE ON APPLICATION |          |                |                |               |                |
| 48"                    |          |        | Series "A" "B"       |               | Series "A" "B"       |          |                |                |               |                |
| 54"                    |          |        |                      |               |                      |          |                |                |               |                |
| 60"                    |          |        |                      |               |                      |          |                |                |               |                |

°Series A and B

## CLASS 600 FLANGES - RAISED OR FLAT FACE

| Size                   | Slip-On              |       | Welding-Neck         |               | Blind                | Threaded       |       | Socket-Weld          |               | Lap Joint      |
|------------------------|----------------------|-------|----------------------|---------------|----------------------|----------------|-------|----------------------|---------------|----------------|
|                        | Reducing             |       | STD & XS             | XXS & SCH-160 |                      | Reducing       |       | STD & XS             | XXS & SCH-160 |                |
| Catalog Page Reference | 45                   |       | 45                   |               | 45                   | 45/46          |       |                      |               | 45             |
| 1/2"                   | \$ 40.63             | \$    | \$ 43.92             | \$ 66.50      | \$ 39.53             | \$ 78.24       | \$    | \$ 62.86             | \$ 74.32      | \$ 66.50       |
| 3/4"                   | 40.63                |       | 43.92                | 66.50         | 39.53                | 78.24          |       | 62.86                | 74.32         | 66.50          |
| 1"                     | 40.63                | 73.51 | 43.92                | 66.50         | 39.53                | 78.24          | 80.70 | 62.86                | 74.32         | 66.50          |
| 1 1/4"                 | 40.63                | 73.51 | 43.92                | 66.50         | 39.53                | 78.24          | 80.70 | 62.86                | 74.32         | 66.50          |
| 1 1/2"                 | 40.63                | 73.51 | 43.92                | 66.50         | 39.53                | 78.24          | 80.70 | 62.86                | 74.32         | 66.50          |
| 2"                     | 49.02                |       | 50.59                | 77.78         | 49.80                | 86.25          |       | 68.24                | 85.33         |                |
| 2 1/2"                 | 68.47                |       | 69.41                | 77.78         | 67.32                | 86.25          |       | 76.31                | 87.71         |                |
| 3"                     | 73.33                |       | 72.94                | 117.62        | 70.56                | 129.80         |       | 92.33                | 87.71         | ON APPLICATION |
| 3 1/2"                 | 146.80               |       | 130.20               |               | 123.90               | 190.27         |       |                      |               |                |
| 4"                     | 146.80               |       | 130.20               |               | 123.90               | 190.27         |       | 151.27               |               |                |
| 5"                     | 164.70               |       | 120.24               |               | 233.67               | 231.35         |       |                      |               |                |
| 6"                     | 334.51               |       | 257.12               |               | 306.90               | 248.58         |       |                      | 240.50        |                |
| 8"                     | 532.68               |       | 494.77               |               | 477.36               | 425.83         |       | ON APPLICATION       |               |                |
| 10"                    | 1,176.44             |       | 692.81               |               | 784.18               | 533.25         |       |                      |               |                |
| 12"                    | 1,827.76             |       | 1,458.69             |               | 1,437.86             | 680.39         |       |                      |               |                |
| 14"                    |                      |       |                      |               |                      |                |       |                      |               |                |
| 16"                    |                      |       |                      |               |                      |                |       |                      |               |                |
| 18"                    | STOCK                |       | STOCK                |               | STOCK                | ON APPLICATION |       | STOCK                |               | ON APPLICATION |
| 20"                    | PRICE ON APPLICATION |       | PRICE ON APPLICATION |               | PRICE ON APPLICATION |                |       | PRICE ON APPLICATION |               |                |
| 24"                    |                      |       |                      |               |                      |                |       |                      |               |                |
| 30"                    |                      |       | °STOCK               |               | °STOCK               |                |       |                      |               |                |
| 36"                    |                      |       |                      |               |                      |                |       |                      |               |                |
| 42"                    |                      |       | PRICE ON APPLICATION |               | PRICE ON APPLICATION |                |       |                      |               |                |
| 48"                    |                      |       | Series "A" "B"       |               | Series "A" "B"       |                |       |                      |               |                |
| 54"                    |                      |       |                      |               |                      |                |       |                      |               |                |
| 60"                    |                      |       |                      |               |                      |                |       |                      |               |                |

°Series A and B

NOTE: PRICE SHEET 109

ALL PRICES ARE  
BASED ON ORDERS  
OF APPROXIMATELY  
EQUAL AMOUNTS OF  
FITTINGS AND FLANGES  
PAGE 6



\* Denotes price change



PHONE: 708/594-1700

773/582-3500

FAX: 708/458-0106

773/582-7621

www.WELDBEND.com

e-mail: info@weldbend.com

## CLASS 900 FLANGES - RAISED OR FLAT FACE

| Size                   | Slip-On   | Welding-Neck |               |                 | Blind                |                      | Threaded  | Socket-Weld |               | Lap Joint |
|------------------------|-----------|--------------|---------------|-----------------|----------------------|----------------------|-----------|-------------|---------------|-----------|
|                        |           | STD & XS     | XXS & SCH-160 | Ring Type Joint | STD                  | Ring Type Joint      |           | STD & XS    | XXS & SCH-160 |           |
| Catalog Page Reference |           |              |               |                 |                      |                      |           |             |               |           |
| *1/2"                  | \$ 149.27 | \$ 88.23     | \$ 118.25     | \$ STOCK        | \$ 141.74            | \$ STOCK             | \$ 148.89 | \$ 146.14   | \$ 206.51     | \$        |
| *3/4"                  | 149.27    | 88.23        | 118.25        | STOCK           | 141.74               | STOCK                | 148.89    | 146.14      | 206.51        |           |
| *1"                    | 149.27    | 88.23        | 118.25        | STOCK           | 141.74               | STOCK                | 148.89    | 146.14      | 206.51        |           |
| *1 1/4"                | 149.27    | 88.23        | 118.25        | STOCK           | 141.74               | STOCK                | 148.89    | 146.14      | 206.51        |           |
| *1 1/2"                | 149.27    | 88.23        | 118.25        | STOCK           | 141.74               | STOCK                | 148.89    | 146.14      | 206.51        |           |
| *2"                    | 149.27    | 95.16        | 95.16         | STOCK           | 141.74               | STOCK                | 148.89    | 146.14      | 206.51        |           |
| *2 1/2"                |           | 275.49       | 275.49        | STOCK           | STOCK                | STOCK                |           |             |               |           |
| 3"                     |           | STOCK        | STOCK         | STOCK           | STOCK                | STOCK                |           |             |               |           |
| 3 1/2"                 |           |              |               |                 |                      |                      |           |             |               |           |
| 4"                     |           | STOCK        | STOCK         | STOCK           | STOCK                | STOCK                |           |             |               |           |
| 5"                     |           |              |               |                 |                      |                      |           |             |               |           |
| 6"                     |           | STOCK        | STOCK         | STOCK           | STOCK                | STOCK                |           |             |               |           |
| 8"                     |           | STOCK        | STOCK         | STOCK           | STOCK                | STOCK                |           |             |               |           |
| 10"                    |           | STOCK        | STOCK         | STOCK           | PRICE ON APPLICATION | PRICE ON APPLICATION |           |             |               |           |
| 12"                    |           | STOCK        | STOCK         | STOCK           |                      |                      |           |             |               |           |
| 14"                    |           | STOCK        | STOCK         | STOCK           |                      |                      |           |             |               |           |
| 16"                    |           | STOCK        | STOCK         | STOCK           |                      |                      |           |             |               |           |
| 18"                    |           | STOCK        | STOCK         | STOCK           | PRICE ON APPLICATION | PRICE ON APPLICATION |           |             |               |           |
| 20"                    |           | STOCK        | STOCK         | STOCK           |                      |                      |           |             |               |           |
| 24"                    |           | STOCK        | STOCK         | STOCK           |                      |                      |           |             |               |           |

\*Dimensions for these sizes same as class 1500



## CLASS 1500 FLANGES - RAISED OR FLAT FACE

| Size                   | Slip-On   | Welding-Neck |               |                 | Blind     |                 | Threaded  | Socket-Weld |               | Lap Joint |
|------------------------|-----------|--------------|---------------|-----------------|-----------|-----------------|-----------|-------------|---------------|-----------|
|                        |           | STD & XS     | XXS & SCH-160 | Ring Type Joint | STD       | Ring Type Joint |           | STD & XS    | XXS & SCH-160 |           |
| Catalog Page Reference |           |              |               |                 |           |                 |           |             |               |           |
| 1/2"                   | \$ 149.27 | \$ 88.23     | \$ 118.25     | \$ STOCK        | \$ 141.74 | \$              | \$ 148.89 | \$ 146.14   | \$ 206.51     | \$        |
| 3/4"                   | 149.27    | 88.23        | 118.25        | STOCK           | 141.74    |                 | 148.89    | 146.14      | 206.51        |           |
| 1"                     | 149.27    | 88.23        | 118.25        | STOCK           | 141.74    |                 | 148.89    | 146.14      | 206.51        |           |
| 1 1/4"                 | 149.27    | 88.23        | 118.25        | STOCK           | 141.74    |                 | 148.89    | 146.14      | 206.51        |           |
| 1 1/2"                 | 149.27    | 88.23        | 118.25        | STOCK           | 141.74    |                 | 148.89    | 146.14      | 206.51        |           |
| 2"                     | 149.27    | 95.16        | 95.16         | STOCK           | 141.74    |                 | 148.89    | 146.14      | 206.51        |           |
| 2 1/2"                 |           | 275.49       | 275.49        | STOCK           |           |                 |           |             |               |           |
| 3"                     |           | STOCK        | STOCK         | STOCK           |           |                 |           |             |               |           |
| 3 1/2"                 |           |              |               |                 |           |                 |           |             |               |           |
| 4"                     |           | STOCK        | STOCK         | STOCK           |           |                 |           |             |               |           |
| 5"                     |           |              |               |                 |           |                 |           |             |               |           |
| 6"                     |           | STOCK        | STOCK         | STOCK           |           |                 |           |             |               |           |
| 8"                     |           | STOCK        | STOCK         | STOCK           |           |                 |           |             |               |           |
| 10"                    |           | STOCK        | STOCK         | STOCK           |           |                 |           |             |               |           |
| 12"                    |           | STOCK        | STOCK         | STOCK           |           |                 |           |             |               |           |
| 14"                    |           | STOCK        | STOCK         | STOCK           |           |                 |           |             |               |           |
| 16"                    |           | STOCK        | STOCK         | STOCK           |           |                 |           |             |               |           |
| 18"                    |           | STOCK        | STOCK         | STOCK           |           |                 |           |             |               |           |
| 20"                    |           | STOCK        | STOCK         | STOCK           |           |                 |           |             |               |           |
| 24"                    |           | STOCK        | STOCK         | STOCK           |           |                 |           |             |               |           |

NOTE: PRICE SHEET 109

ALL PRICES ARE  
BASED ON ORDERS  
OF APPROXIMATELY  
EQUAL AMOUNTS OF  
FITTINGS AND FLANGES  
PAGE 7



PHONE: 708/594-1700

773/582-3500

FAX: 708/458-0106

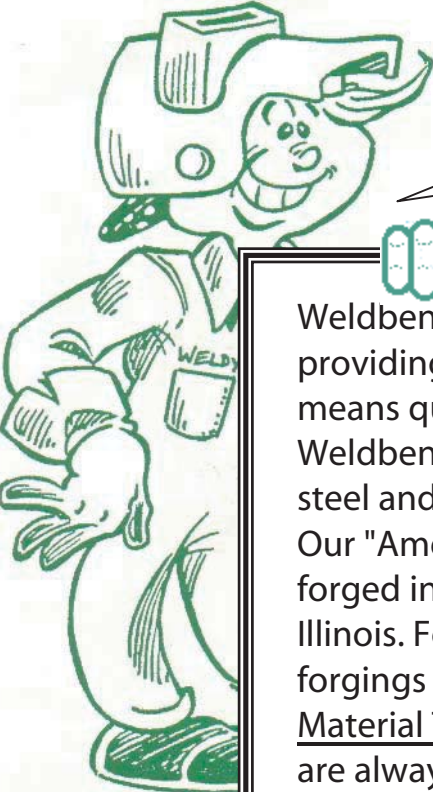
773/582-7621

www.WELDBEND.com

e-mail: info@weldbend.com

# WELDBEND

"The New Standard for Welding Fittings and Flanges"



Weldy Weldbend's  
pledge of quality sez:

Weldbend has long been known in the fittings and flange field for providing the best quality and the best value. The name "Weldbend" means quality.

Weldbend pledges to use the highest grade and /or best quality steel and forgings in our lines of fittings and flanges.

Our "American made" line uses only top-quality steel from U.S. mills, forged into fittings and flanges at Weldbend's own plant in Argo, Illinois. For our other lines, we search worldwide for steel and/or forgings to maintain our high quality and our rate of production. Material Test Reports, which identify the source of the steel used, are always available, at no charge. We are proud to compare our fittings and flanges with any produced in the world.

All Weldbend sales are made solely in accordance with Weldbend's standard terms and conditions of sales, which are set forth in our catalog. Weldbend provides a catalog for the convenience of its customers in ordering Weldbend products.

**WELDBEND** We stand for value, quality, fair and equal pricing.

**WELDBEND fittings conform to ASTM A234, ASME SA234, WPB specifications and to ASME/ANSI B16.9, B16.28 specifications.**

**WELDBEND flanges conform to ASTM A105, ASME SA105 and to ASME/ANSI B16.5, B16.47 specifications.**

*Prices are subject to change without notice*