

Quality Products

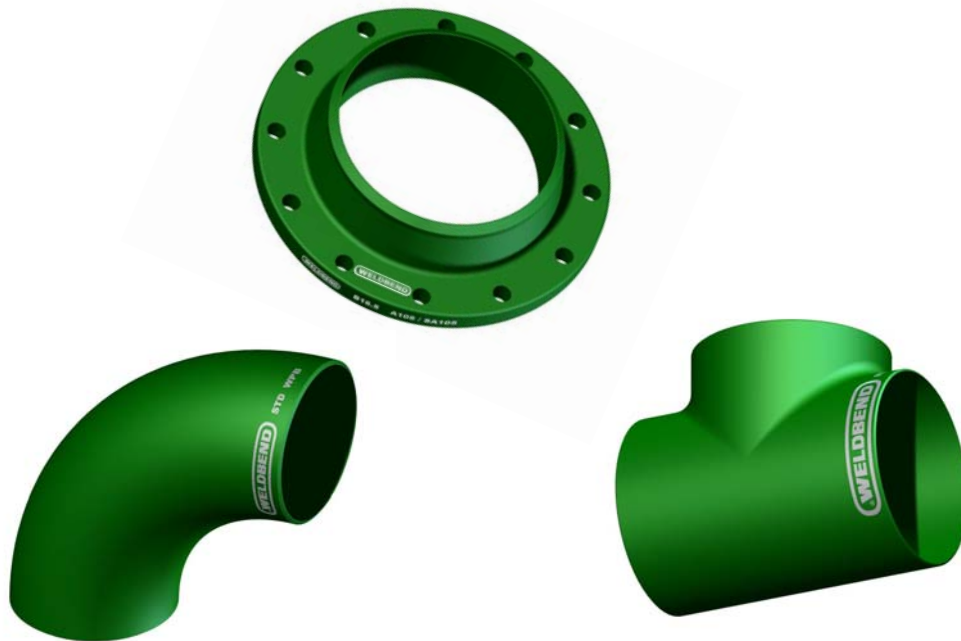
From



“The Industry Standard for Welding Fittings and Flanges”

1/2" THRU 60"

(CARBON STEEL ONLY)



LIST PRICE SCHEDULE No. 109

Weldbend Corporation
6600 South Harlem Ave.
Argo, Illinois 60501-1930

Effective January 5, 2010

Phone: 708/594-1700
773/582-3500
Fax: 708/458-0106
773/582-7621

www.weldbend.com
e-mail: info@weldbend.com



ISO 9001:2000 Approved

* Denotes price change

STANDARD - WELDING FITTINGS

Size	Elbows					180° Return Bends		Tees		Caps	Stub Ends
	Long Radius	Short Radius	3R-90°	45°	3R-45°	Long Radius	Short Radius	Straight	Reducing		
Catalog Page Reference	22	23		25		26	27	28	30-31	36	37
1/2"	\$ 16.56	\$	\$	\$ 17.60	\$	\$ 154.60	\$	\$ 54.52	\$	\$ 20.36	\$ 235.71
3/4"	16.56			17.60		154.60		54.52	63.15	20.36	235.71
1"	16.56	26.57		17.60		154.60		54.52	63.15	20.36	235.71
1 1/4"	16.56	26.57		17.60		154.60	222.58	54.52	63.15	20.36	235.71
1 1/2"	16.56	26.57		17.60		154.60	222.58	54.52	63.15	20.36	235.71
2"	23.15	35.22	267.74	22.60	352.44	154.60	222.58	55.77	93.27	22.52	235.70
2 1/2"	28.05	56.42	395.91	27.07	380.25	154.60	222.58	76.96	102.40	23.68	242.60
3"	34.24	66.20	342.75	28.05	314.38	177.03	222.58	85.77	99.79	23.68	242.60
3 1/2"	56.42	86.75		50.55			256.75	120.34	126.53	34.55	345.09
4"	56.42	86.75	490.15	50.55	416.78	245.36	256.75	120.34	126.53	34.55	345.09
5"	121.64	257.96		76.64		739.88	736.43	198.61	273.29	53.19	345.09
6"	124.42	229.26	874.00	99.47	653.54	570.44	661.54	206.76	258.65	59.01	657.05
8"	234.95	379.60	1,701.03	165.67	1,191.31	1,313.42	1,523.24	360.69	469.28	89.29	817.52
10"	467.65	777.14	3,125.51	330.68	2,472.95	1,976.05	1,566.01	708.65	865.84	161.89	ON APPLICATION
12"	692.67	1,085.97	4,307.36	467.65	3,019.85		1,633.99	991.72	1,278.06	244.20	
14"	999.40	1,507.64	5,748.80	628.75	4,160.94	ON APPLICATION		1,739.84	1,927.68	324.95	
16"	1,362.85	1,824.95	7,131.87	1,126.74	4,965.14			1,944.97	2,036.60	378.91	
18"	1,803.76	2,827.11	10,726.01	1,593.41	8,165.99			3,354.22	3,899.01	518.67	
20"	2,495.13	2,950.06	10,993.75	1,649.50	8,358.72			4,850.35	4,986.01	588.55	
24"	3,528.59	4,539.88	15,325.25	2,499.69	10,876.35			6,260.15	6,917.28	800.14	
30"											
36"											
42"	STOCK	STOCK		STOCK				STOCK	STOCK	STOCK	
48"											
54"	PRICE ON APPLICATION	PRICE ON APPLICATION		PRICE ON APPLICATION				PRICE ON APPLICATION	PRICE ON APPLICATION	PRICE ON APPLICATION	
60"											

EXTRA STRONG - WELDING FITTINGS

Size	Elbows					180° Return Bends		Tees		Caps	Stub Ends
	Long Radius	Short Radius	3R-90°	45°	3R-45°	Long Radius	Short Radius	Straight	Reducing		
Catalog Page Reference	22	23		25		26	27	29	32-33	36	37
1/2"	\$ 21.74	\$	\$	\$ 23.12	\$	\$ 195.67	\$	\$ 53.83	\$	\$ 25.19	\$ 267.45
3/4"	21.74			23.12				53.83	81.79	25.19	267.45
1"	21.74	52.45		23.12		195.67		53.83	81.79	25.19	267.45
1 1/4"	21.74	52.45		23.12		195.67	243.29	53.83	81.79	25.19	267.45
1 1/2"	21.74	52.45		23.12		195.67	243.29	53.83	81.79	25.19	267.45
2"	27.76	87.35	256.98	29.05	359.71	220.13	273.70	61.34	87.74	22.52	267.45
2 1/2"	39.06	87.35	457.87	64.56	380.25	220.13	273.70	102.10	95.26	31.06	257.09
3"	50.04	87.35	376.01	37.45	318.29	319.90	363.38	95.12	110.65	34.55	295.05
3 1/2"	82.32	143.64		59.08		395.99	619.22	153.74	164.61	46.98	389.61
4"	82.32	143.64	653.54	59.08	557.01	395.99	619.22	153.74	164.61	46.98	389.61
5"	196.60	322.62		140.43		930.58	1,094.42	335.04	485.22	76.87	389.62
6"	208.22	334.65	1,140.76	161.73	825.08	1,094.42	1,140.61	294.40	304.76	95.50	1,285.12
8"	395.78	715.89	2,191.51	279.57	1,460.35	2,153.11	2,669.46	582.66	606.41	143.26	
10"	834.82	1,079.27	4,751.21	538.47	3,176.71		2,847.06	868.47	1,049.77	220.13	ON APPLICATION
12"	1,023.03	1,289.69	4,967.32	798.67	4,239.53		2,941.18	1,263.68	1,684.91	294.28	
14"	1,418.16	1,856.90	5,228.76	1,008.50	4,431.37	ON APPLICATION		2,399.25	2,582.49	446.46	
16"	1,788.12	2,248.23	8,708.47	1,225.12	6,666.64			2,276.96	3,300.89	512.07	
18"	2,341.44	2,934.62	12,926.80	1,842.68	9,019.58			4,811.70	4,749.97	692.60	
20"	3,337.67	3,581.02	12,679.08	2,193.26	8,825.49			5,259.44	5,514.00	732.97	
24"	5,431.18	5,481.78	16,286.14	3,680.19	12,746.41			7,080.83	6,898.43	1,043.95	
30"											
36"											
42"	STOCK	STOCK		STOCK				STOCK	STOCK	STOCK	
48"											
54"	PRICE ON APPLICATION	PRICE ON APPLICATION		PRICE ON APPLICATION				PRICE ON APPLICATION	PRICE ON APPLICATION	PRICE ON APPLICATION	
60"											

NOTE: PRICE SHEET 109

ALL PRICES ARE
BASED ON ORDERS
OF APPROXIMATELY
EQUAL AMOUNTS OF
FITTINGS AND FLANGES
PAGE 2



* Denotes price change



PHONE: 708/594-1700

773/582-3500

FAX: 708/458-0106

773/582-7621

www.WELDBEND.com

e-mail: info@weldbend.com

WELDING REDUCERS

Size	STANDARD		EXTRA STRONG		XXS & SCH-160		Size	STANDARD		EXTRA STRONG	
	Concentric	Eccentric	Concentric	Eccentric	Concentric	Eccentric		Concentric	Eccentric	Concentric	Eccentric
Catalog Page Reference	34	34	35	35			Catalog Page Reference	34	34	35	35
3/4 x 1/2"	\$ 54.75	\$ 74.15	\$ 39.97	\$ 68.45	\$	\$	8 x 5"	\$144.63	\$ 254.22	\$ 229.07	\$ 332.37
1 x 1/2"	54.75	74.15	39.97	68.45			8 x 6"	128.46	195.83	187.75	291.05
1 x 3/4"	54.75	74.15	39.97	68.45			10 x 4"	426.25	707.87	610.85	975.11
1 1/4 x 1/2"	54.75	74.15	39.97	68.45			10 x 5"	341.36	541.68	446.46	768.05
1 1/4 x 3/4"	54.75	74.15	39.97	68.45			10 x 6"	234.01	451.40	321.14	689.90
1 1/4 x 1"	54.75	74.15	39.97	68.45			10 x 8"	249.28	256.47	269.04	471.61
1 1/2 x 1/2"	54.75	74.15	39.97	68.45			12 x 4"	861.03	2,269.19	1,386.98	1,893.12
1 1/2 x 3/4"	54.75	74.15	39.97	68.45			12 x 5"	1,030.61	1,763.44	1,490.19	1,780.85
1 1/2 x 1"	54.75	74.15	39.97	68.45			12 x 6"	371.00	1,012.84	480.14	1,019.13
1 1/2 x 1 1/4"	54.75	74.15	39.97	68.45			12 x 8"	354.38	627.92	446.46	876.30
2 x 1/2"	253.21	352.98	253.21	519.18			12 x 10"	308.12	400.20	439.27	674.63
2 x 3/4"	75.01	207.06	107.35	386.27			14 x 6"	1,357.89	2,017.99	2,538.64	2,898.03
2 x 1"	48.51	72.76	48.96	93.87			14 x 8"	783.32	1,210.92	1,302.54	2,050.83
2 x 1 1/4"	35.03	72.76	47.16	108.25			14 x 10"	634.65	822.40	704.27	1,638.96
2 x 1 1/2"	35.03	44.92	39.08	49.41			14 x 12"	463.53	702.48	704.27	1,539.70
2 1/2 x 3/4"	451.66	630.33	416.02	631.09			16 x 6"	2,353.67	3,883.50	4,303.47	9,543.42
2 1/2 x 1"	90.73	259.16	116.33	265.00			16 x 8"	1,179.92	3,113.08	1,889.59	7,139.74
2 1/2 x 1 1/4"	76.36	110.49	81.75	118.13			16 x 10"	896.51	1,564.85	1,438.19	2,096.20
2 1/2 x 1 1/2"	57.04	61.08	53.45	74.11			16 x 12"	811.17	1,427.41	1,001.61	1,916.98
2 1/2 x 2"	44.02	52.10	53.45	74.11			16 x 14"	811.17	1,074.37	987.69	1,500.17
3 x 1"	89.38	291.95	111.39	339.11			18 x 8"	4,310.43	4,706.88	7,033.17	6,554.61
3 x 1 1/4"	70.97	250.63	88.48	280.27			18 x 10"	1,445.82	2,394.43	2,453.72	3,975.00
3 x 1 1/2"	44.92	69.62	59.74	101.96			18 x 12"	1,196.54	2,120.90	1,888.24	2,579.93
3 x 2"	39.08	61.08	44.92	61.08			18 x 14"	1,104.92	2,000.08	1,675.34	1,477.07
3 x 2 1/2"	36.38	57.04	44.92	61.08			18 x 16"	886.18	1,935.40	1,381.59	2,407.01
3 1/2 x 1 1/4"	218.97	390.99	334.08	390.80			20 x 10"	2,596.10	8,551.46	2,688.63	11,404.12
3 1/2 x 1 1/2"	201.70	365.60	295.70	365.60			20 x 12"	1,952.92	6,710.79	2,409.26	8,430.60
3 1/2 x 2"	97.47	109.59	118.13	147.77			20 x 14"	1,583.26	5,483.71	2,091.71	6,238.29
3 1/2 x 2 1/2"	93.87	102.41	156.75	141.03			20 x 16"	1,520.83	2,424.53	1,790.77	3,463.87
3 1/2 x 3"	93.87	97.47	156.75	122.62			20 x 18"	1,520.83	2,430.82	1,838.38	2,593.41
4 x 1"	151.28	624.02	182.78	807.53			24 x 10"	6,562.57	12,259.92	7,079.77	15,961.88
4 x 1 1/4"	151.28	624.02	182.78	807.53			24 x 12"	3,952.55	10,891.94	6,059.52	11,974.65
4 x 1 1/2"	102.86	304.97	110.49	490.48			24 x 14"	3,603.55	8,487.64	6,039.76	10,690.94
4 x 2"	57.04	90.73	75.46	131.15			24 x 16"	1,835.69	5,281.14	5,082.61	8,030.41
4 x 2 1/2"	57.04	78.60	67.82	99.26			24 x 18"	1,759.33	3,503.84	5,082.61	6,645.67
4 x 3"	46.71	74.56	57.49	95.67			24 x 20"	1,720.26	3,187.19	4,622.68	5,634.17
4 x 3 1/2"	48.96	74.56	59.74	95.67			30 x 16"			STOCK	STOCK
5 x 2"	180.11	557.40	442.42	1,040.69			30 x 18"			STOCK	STOCK
5 x 2 1/2"	180.11	235.36	212.90	306.77			30 x 20"			PRICE ON APPLICATION	PRICE ON APPLICATION
5 x 3"	118.13	150.47	178.31	276.23			30 x 24"			PRICE ON APPLICATION	PRICE ON APPLICATION
5 x 3 1/2"	107.16	163.88	126.06	220.60			36 x 18"			STOCK	STOCK
5 x 4"	86.69	150.47	122.62	221.43			36 x 20"			STOCK	STOCK
6 x 2"	295.54	531.80	367.86	687.20			36 x 24"			PRICE ON APPLICATION	PRICE ON APPLICATION
6 x 2 1/2"	235.81	414.57	432.53	495.86			36 x 30"			PRICE ON APPLICATION	PRICE ON APPLICATION
6 x 3"	118.58	240.75	161.25	269.04			42 x 24"			STOCK	STOCK
6 x 3 1/2"	163.49	327.76	215.14	441.24			42 x 30"			PRICE ON APPLICATION	PRICE ON APPLICATION
6 x 4"	97.92	153.61	137.89	207.06			42 x 36"			PRICE ON APPLICATION	PRICE ON APPLICATION
6 x 5"	87.58	110.49	133.85	254.67			48 x 24"				
8 x 3"	360.22	609.50	592.43	767.15			48 x 30"				
8 x 3 1/2"	466.44	850.93	743.79	1,008.53			48 x 36"			STOCK	STOCK
8 x 4"	165.29	357.97	229.07	406.03			48 x 42"			PRICE ON APPLICATION	PRICE ON APPLICATION

NOTE: PRICE SHEET 109
 ALL PRICES ARE
 BASED ON ORDERS
 OF APPROXIMATELY
 EQUAL AMOUNTS OF
 FITTINGS AND FLANGES
 PAGE 3



PHONE: 708/594-1700
 773/582-3500
 FAX: 708/458-0106
 773/582-7621
 www.WELDBEND.com
 e-mail: info@weldbend.com

TRUE SCHEDULE - 80 - WELDING FITTINGS

Size	Elbows			Tees		Caps
	Long Radius	Short Radius	45°	Straight	Reducing	
	PRICE ON APPLICATION	PRICE ON APPLICATION	PRICE ON APPLICATION	PRICE ON APPLICATION	PRICE ON APPLICATION	
	\$	\$	\$	\$	\$	\$
10"	STOCK	STOCK	STOCK	STOCK	STOCK	
12"	STOCK	STOCK	STOCK	STOCK	STOCK	
14"	STOCK	STOCK	STOCK	STOCK	STOCK	
16"	STOCK	STOCK	STOCK	STOCK	STOCK	
18"	STOCK	STOCK	STOCK	STOCK	STOCK	
20"	STOCK	STOCK	STOCK	STOCK	STOCK	
24"	STOCK	STOCK	STOCK	STOCK	STOCK	

DOUBLE EXTRA STRONG & SCHEDULE 160 WELDING FITTINGS

Size	Tees-Straight		Tees-Reducing		Long Radius		Elbows		45°		Caps	
	XXS	SCH-160	XXS	SCH-160	XXS	SCH-160	Short Radius		XXS	SCH-160	XXS	SCH-160
							XXS	SCH-160				
1/2"	\$ 131.67	\$	\$	\$	\$	\$	\$	\$	\$	\$	\$	\$
3/4"	131.67											
1"	131.67	131.67	PRICE ON APPLICATION		PRICE ON APPLICATION		PRICE ON APPLICATION		PRICE ON APPLICATION		PRICE ON APPLICATION	
1 1/4"	131.67	131.67										
1 1/2"	131.67	131.67										
2"	304.76	274.09			218.96	173.15			192.56	163.44		
2 1/2"	716.28	473.25			249.63	214.30			224.78	192.56		
3"	856.43	584.28	PRICE ON APPLICATION		356.01	204.21	PRICE ON APPLICATION		329.99	179.36	PRICE ON APPLICATION	
4"	1,450.03	752.00			466.65	335.82			416.57	279.52		
5"					1,418.59	949.61			822.66	748.12		
6"	3,483.57	3,350.80			1,368.50	861.87			954.27	608.74		
8"												

Y52 STANDARD - WELDING FITTINGS

Size	Elbows			Tees		Reducers	
	Long Radius	Short Radius	45°	Straight	Reducing	Concentric	Eccentric
	PRICE ON APPLICATION	PRICE ON APPLICATION	PRICE ON APPLICATION	PRICE ON APPLICATION	PRICE ON APPLICATION	PRICE ON APPLICATION	
2"	\$ STOCK	\$ STOCK	\$ STOCK	\$ STOCK	\$ STOCK	\$ STOCK	
2 1/2"	STOCK	STOCK	STOCK	STOCK	STOCK	STOCK	
3"	STOCK	STOCK	STOCK	STOCK	STOCK	STOCK	
4"	STOCK	STOCK	STOCK	STOCK	STOCK	STOCK	
5"	STOCK	STOCK	STOCK	STOCK	STOCK	STOCK	
6"	STOCK	STOCK	STOCK	STOCK	STOCK	STOCK	
8"	STOCK	STOCK	STOCK	STOCK	STOCK	STOCK	
10"	STOCK	STOCK	STOCK	STOCK	STOCK	STOCK	
12"	STOCK	STOCK	STOCK	STOCK	STOCK	STOCK	
14"	STOCK	STOCK	STOCK	STOCK	STOCK	STOCK	
16"	STOCK	STOCK	STOCK	STOCK	STOCK	STOCK	
18"	STOCK	STOCK	STOCK	STOCK	STOCK	STOCK	
20"	STOCK	STOCK	STOCK	STOCK	STOCK	STOCK	
24"	STOCK	STOCK	STOCK	STOCK	STOCK	STOCK	

NOTE: PRICE SHEET 109

ALL PRICES ARE
BASED ON ORDERS
OF APPROXIMATELY
EQUAL AMOUNTS OF
FITTINGS AND FLANGES
PAGE 4



PHONE: 708/594-1700

773/582-3500

FAX: 708/458-0106

773/582-7621

www.WELDBEND.com

e-mail: info@weldbend.com

Y52 EXTRA STRONG - WELDING FITTINGS

Size	Elbows			Tees		Reducers	
	Long Radius	Short Radius	45°	Straight	Reducing	Concentric	Eccentric
	PRICE ON APPLICATION	PRICE ON APPLICATION	PRICE ON APPLICATION	PRICE ON APPLICATION	PRICE ON APPLICATION	PRICE ON APPLICATION	PRICE ON APPLICATION
2"	\$ STOCK	\$ STOCK	\$ STOCK	\$ STOCK	\$ STOCK	\$ STOCK	
2½"	STOCK	STOCK	STOCK	STOCK	STOCK	STOCK	
3"	STOCK	STOCK	STOCK	STOCK	STOCK	STOCK	
4"	STOCK	STOCK	STOCK	STOCK	STOCK	STOCK	
5"	STOCK	STOCK	STOCK	STOCK	STOCK	STOCK	
6"	STOCK	STOCK	STOCK	STOCK	STOCK	STOCK	
8"	STOCK	STOCK	STOCK	STOCK	STOCK	STOCK	
10"	STOCK	STOCK	STOCK	STOCK	STOCK	STOCK	
12"	STOCK	STOCK	STOCK	STOCK	STOCK	STOCK	
14"	STOCK	STOCK	STOCK	STOCK	STOCK		
16"	STOCK	STOCK	STOCK	STOCK	STOCK		
18"	STOCK	STOCK	STOCK	STOCK	STOCK		
20"	STOCK	STOCK	STOCK	STOCK	STOCK		
24"	STOCK	STOCK	STOCK	STOCK	STOCK		



CLASS 150 FLANGES - RAISED OR FLAT FACE

Size	Slip-On		Welding-Neck		Blind	Threaded		Socket-Weld		Lap Joint
	Reducing		STD & XS	XXS & SCH-160		Reducing		STD & XS	XXS & SCH-160	
Catalog Page Reference	41		41		41	41/46				41
½"	\$ 20.59	\$	\$ 30.11	\$ 45.84	\$ 24.71	\$ 31.02	\$	\$ 27.18	\$ 36.78	\$ 21.69
¾"	20.59		30.11	45.84	24.71	31.02		27.18	36.78	21.69
1"	20.59	66.71	30.11	45.84	24.71	31.02	86.75	27.18	36.78	21.69
1¼"	20.59	66.71	30.11	45.84	24.71	31.02	86.75	27.18	36.78	21.69
1½"	20.59	66.71	30.11	45.84	24.71	31.02	86.75	27.18	36.78	21.69
2"	22.88	74.65	34.48	49.02	27.58	34.75	97.07	29.93	41.16	24.18
2½"	39.16	104.14	37.49	52.26	41.96	42.59	113.97	40.21	59.90	38.93
3"	31.08	78.95	40.92	63.90	35.16	42.85	103.22	38.14	54.37	32.92
3½"	38.95		49.67		49.28	49.80				40.39
4"	38.95	84.47	49.67	121.95	49.28	49.80	109.36	49.65		40.39
5"	67.84	206.12	78.43	217.73	64.81	78.38	249.44	need		63.40
6"	64.05	229.18	75.03	242.07	75.03	86.14	249.44	81.18		67.84
8"	97.25	288.44	132.55		123.11	147.84	436.52	116.99		107.56
10"	167.84	438.41	212.29		237.10	268.71	627.90			169.93
12"	248.89	681.33	308.50		357.10	375.03	869.49	222.60		311.61
14"	330.69		444.71		591.37					664.29
16"	516.99		668.63		872.81					867.15
18"	642.35		941.05		1,183.27	ON APPLICATION		ON APPLICATION		987.82
20"	734.41		1,147.06		1,487.35					1,113.55
24"	1,061.31		1,542.48		2,052.94					1,333.44
*30" 0										
*36" 0	*STOCK		*STOCK		*STOCK					
*42" 0										
*48" 0	PRICE ON APPLICATION		PRICE ON APPLICATION		PRICE ON APPLICATION					
*54" 0			Series "A" "B"		Series "A" "B"					
*60" 0										

* Class 125 °Series A and B

NOTE: PRICE SHEET 109

ALL PRICES ARE
BASED ON ORDERS
OF APPROXIMATELY
EQUAL AMOUNTS OF
FITTINGS AND FLANGES
PAGE 5



PHONE: 708/594-1700

773/582-3500

FAX: 708/458-0106

773/582-7621

www.WELDBEND.com

e-mail: info@weldbend.com

CLASS 300 FLANGES - RAISED OR FLAT FACE

Size	Slip-On		Welding-Neck		Blind	Threaded		Socket-Weld		Lap Joint
	Reducing		STD & XS	XXS & SCH-160		Reducing		STD & XS	XXS & SCH-160	
Catalog Page Reference	43		43		43	43/46				43
1/2"	\$ 27.45	\$	\$ 36.24	\$ 51.88	\$ 32.12	\$ 34.31	\$	\$ 34.31	\$ 44.20	\$ 29.92
3/4"	27.45		36.24	51.88	32.12	34.31		34.31	44.20	29.92
1"	27.45	119.14	36.24	51.88	32.12	34.31	133.41	34.31	44.20	29.92
1 1/4"	27.45	119.14	36.24	51.88	32.12	34.31	133.41	34.31	44.20	29.92
1 1/2"	27.45	119.14	36.24	51.88	32.12	34.31	133.41	34.31	44.20	29.92
2"	36.47	119.14	45.10	54.08	35.95	39.87	133.41	39.08	50.51	34.38
2 1/2"	41.18		51.63	54.09	63.14	55.82		47.22	43.82	49.54
3"	44.84	164.98	52.16	69.45	51.22	59.48	197.37	62.09	64.89	51.63
3 1/2"	64.58		85.75		81.57	85.62				78.41
4"	64.58		85.75	112.55	81.57	85.62		101.26	101.55	78.41
5"	112.05		130.59	158.35	141.44	129.10		129.10	134.54	130.59
6"	112.39		133.33	231.41	143.01	160.26			164.29	140.52
8"	191.87		229.80		221.41	296.30				235.27
10"	327.32		415.95		441.28	308.83		ON APPLICATION		363.69
12"	402.54		534.88		637.52	373.61				513.25
14"	1,002.98		1,150.20		1,309.57					
16"	1,102.88		1,361.80		1,750.56					
18"	1,372.21		1,734.85		2,274.90					
20"	1,520.55		2,167.32		2,616.34		ON APPLICATION			ON APPLICATION
24"	2,403.66		2,992.42		3,918.80					
30"			°STOCK		°STOCK					
36"										
42"			°STOCK		°STOCK					
48"			PRICE ON APPLICATION		PRICE ON APPLICATION					
54"			Series "A" "B"		Series "A" "B"					
60"										

°Series A and B

CLASS 600 FLANGES - RAISED OR FLAT FACE

Size	Slip-On		Welding-Neck		Blind	Threaded		Socket-Weld		Lap Joint
	Reducing		STD & XS	XXS & SCH-160		Reducing		STD & XS	XXS & SCH-160	
Catalog Page Reference	45		45		45	45/46				45
1/2"	\$ 40.63	\$	\$ 43.92	\$ 66.50	\$ 39.53	\$ 78.24	\$	\$ 62.86	\$ 74.32	\$ 66.50
3/4"	40.63		43.92	66.50	39.53	78.24		62.86	74.32	66.50
1"	40.63	73.51	43.92	66.50	39.53	78.24	80.70	62.86	74.32	66.50
1 1/4"	40.63	73.51	43.92	66.50	39.53	78.24	80.70	62.86	74.32	66.50
1 1/2"	40.63	73.51	43.92	66.50	39.53	78.24	80.70	62.86	74.32	66.50
2"	49.02		50.59	77.78	49.80	86.25		68.24	85.33	
2 1/2"	68.47		69.41	77.78	67.32	86.25		76.31	87.71	
3"	73.33		72.94	117.62	70.56	129.80		92.33	87.71	ON APPLICATION
3 1/2"	146.80		130.20		123.90	190.27				
4"	146.80		130.20		123.90	190.27		151.27		
5"	164.70		120.24		233.67	231.35				
6"	334.51		257.12		306.90	248.58			240.50	
8"	532.68		494.77		477.36	425.83		ON APPLICATION		
10"	1,176.44		692.81		784.18	533.25				
12"	1,827.76		1,458.69		1,437.86	680.39				
14"										
16"										
18"	STOCK		STOCK		STOCK	ON APPLICATION		STOCK		ON APPLICATION
20"	PRICE ON APPLICATION		PRICE ON APPLICATION		PRICE ON APPLICATION			PRICE ON APPLICATION		
24"										
30"			°STOCK		°STOCK					
36"										
42"			°STOCK		°STOCK					
48"			PRICE ON APPLICATION		PRICE ON APPLICATION					
54"			Series "A" "B"		Series "A" "B"					
60"										

°Series A and B

NOTE: PRICE SHEET 109

ALL PRICES ARE
BASED ON ORDERS
OF APPROXIMATELY
EQUAL AMOUNTS OF
FITTINGS AND FLANGES
PAGE 6



* Denotes price change



PHONE: 708/594-1700

773/582-3500

FAX: 708/458-0106

773/582-7621

www.WELDBEND.com

e-mail: info@weldbend.com

CLASS 600 FLANGES - OCTAGONAL RING TYPE- JOINT

Size	Slip-On	Welding-Neck			Blind	Threaded	Socket-Weld		Lap Joint
		STD & XS	SCH-80	XXS & SCH-160			STD & XS	XXS & SCH-160	
Catalog Page Reference									
2"		STOCK	STOCK	STOCK	STOCK				
2½"		STOCK	STOCK	STOCK	STOCK				
3"		STOCK	STOCK	STOCK	STOCK				
4"		STOCK	STOCK	STOCK	STOCK				
5"		STOCK	STOCK	STOCK	STOCK				
6"		STOCK	STOCK	STOCK	STOCK				
8"		STOCK	STOCK	STOCK	STOCK				
10"		STOCK	STOCK	STOCK	STOCK				
12"		STOCK	STOCK	STOCK	STOCK				
14"									
16"									
18"									
20"									
24"									



CLASS 900 FLANGES - RAISED OR FLAT FACE

Size	Slip-On	Welding-Neck			Blind		Threaded	Socket-Weld		Lap Joint
		STD & XS	XXS & SCH-160	Ring Type Joint	STD	Ring Type Joint		STD & XS	XXS & SCH-160	
Catalog Page Reference										
*½"	\$ 149.27	\$ 88.23	\$ 118.25	\$ STOCK	\$ 141.74	\$ STOCK	\$ 148.89	\$ 146.14	\$ 206.51	PRICE ON APPLICATION
*¾"	149.27	88.23	118.25	STOCK	141.74	STOCK	148.89	146.14	206.51	
*1"	149.27	88.23	118.25	STOCK	141.74	STOCK	148.89	146.14	206.51	
*1¼"	149.27	88.23	118.25	STOCK	141.74	STOCK	148.89	146.14	206.51	
*1½"	149.27	88.23	118.25	STOCK	141.74	STOCK	148.89	146.14	206.51	
*2"	149.27	95.16	95.16	STOCK	141.74	STOCK	148.89	146.14	206.51	
*2½"		275.49	275.49	STOCK	STOCK	STOCK				
3"		STOCK	STOCK	STOCK	STOCK	STOCK				
3½"										
4"		STOCK	STOCK	STOCK	STOCK	STOCK				
5"										
6"		STOCK	STOCK	STOCK	STOCK	STOCK				
8"		STOCK	STOCK	STOCK	STOCK	STOCK				
10"		STOCK	STOCK	STOCK	STOCK	STOCK				
12"		STOCK	STOCK	STOCK	STOCK	STOCK				
14"		STOCK	STOCK	STOCK	STOCK	STOCK				
16"		STOCK	STOCK	STOCK	STOCK	STOCK				
18"		STOCK	STOCK	STOCK	STOCK	STOCK				
20"		STOCK	STOCK	STOCK	STOCK	STOCK				
24"		STOCK	STOCK	STOCK	STOCK	STOCK				

*Dimensions for these sizes same as class 1500

NOTE: PRICE SHEET 109

ALL PRICES ARE
BASED ON ORDERS
OF APPROXIMATELY
EQUAL AMOUNTS OF
FITTINGS AND FLANGES
PAGE 7



PHONE: 708/594-1700

773/582-3500

FAX: 708/458-0106

773/582-7621

www.WELDBEND.com

e-mail: info@weldbend.com

CLASS 1500 FLANGES - RAISED OR FLAT FACE

Size	Slip-On	Welding-Neck			Blind		Threaded	Socket-Weld		Lap Joint
		STD & XS	XXS & SCH-160	Ring Type Joint	STD	Ring Type Joint		STD & XS	XXS & SCH-160	
Catalog Page Reference										
1/2"	\$ 149.27	\$ 88.23	\$ 118.25	\$ STOCK	\$ 141.74	\$	\$ 148.89	\$ 146.14	\$ 206.51	PRICE ON APPLICATION
3/4"	149.27	88.23	118.25	STOCK	141.74		148.89	146.14	206.51	
1"	149.27	88.23	118.25	STOCK	141.74		148.89	146.14	206.51	
1 1/4"	149.27	88.23	118.25	STOCK	141.74		148.89	146.14	206.51	
1 1/2"	149.27	88.23	118.25	STOCK	141.74		148.89	146.14	206.51	
2"	149.27	95.16	95.16	STOCK	141.74	STOCK	148.89	146.14	206.51	
2 1/2"		275.49	275.49	STOCK	STOCK	STOCK				
3"		STOCK	STOCK	STOCK	STOCK	STOCK				
3 1/2"										
4"		STOCK	STOCK	STOCK	STOCK	STOCK				
5"										
6"		STOCK	STOCK	STOCK						
8"		STOCK	STOCK	STOCK						
10"		STOCK	STOCK	STOCK	STOCK	STOCK				
12"		STOCK	STOCK	STOCK	STOCK	STOCK				
14"		STOCK	STOCK	STOCK	STOCK	STOCK				
16"		STOCK	STOCK	STOCK	STOCK	STOCK				
18"		STOCK	STOCK	STOCK	STOCK	STOCK				
20"		STOCK	STOCK	STOCK	STOCK	STOCK				
24"		STOCK	STOCK	STOCK	STOCK	STOCK				



CLASS 2500 FLANGES - RAISED OR FLAT FACE

Size	Slip-On	Welding-Neck			Blind		Threaded	Socket-Weld		Lap Joint
		STD & XS	XXS & SCH-160	Ring Type Joint	STD	Ring Type Joint		STD & XS	XXS & SCH-160	
Catalog Page Reference										
1/2"	\$ STOCK	\$ STOCK	\$ STOCK	\$ STOCK	\$ STOCK	\$ STOCK				
3/4"	STOCK	STOCK	STOCK	STOCK	STOCK	STOCK				
1"		STOCK	STOCK	STOCK						
1 1/4"										
1 1/2"										
2"		\$ STOCK	\$ STOCK	\$ STOCK	\$	\$				
2 1/2"					STOCK	STOCK				
3"		STOCK	STOCK	STOCK	STOCK	STOCK				
3 1/2"		STOCK	STOCK	STOCK						
4"		STOCK	STOCK	STOCK						
5"										
6"										
8"										
10"										
12"										

NOTE: PRICE SHEET 109

ALL PRICES ARE
BASED ON ORDERS
OF APPROXIMATELY
EQUAL AMOUNTS OF
FITTINGS AND FLANGES
PAGE 8



PHONE: 708/594-1700

773/582-3500

FAX: 708/458-0106

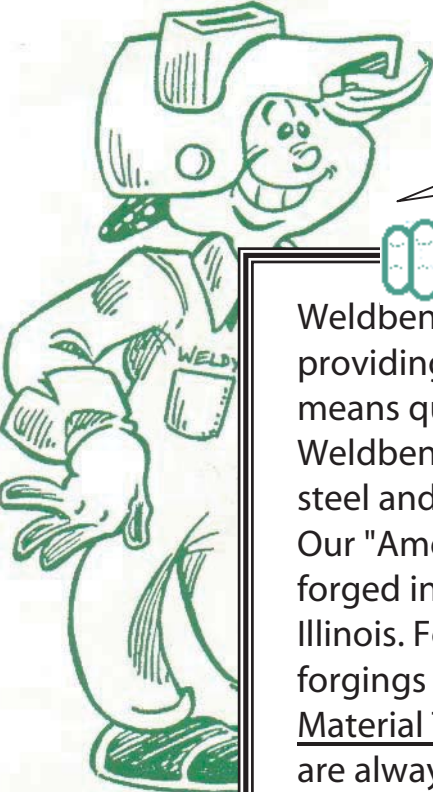
773/582-7621

www.WELDBEND.com

e-mail: info@weldbend.com

WELDBEND

“The New Standard for Welding Fittings and Flanges”



Weldy Weldbend's
pledge of quality sez:

Weldbend has long been known in the fittings and flange field for providing the best quality and the best value. The name "Weldbend" means quality.

Weldbend pledges to use the highest grade and /or best quality steel and forgings in our lines of fittings and flanges.

Our "American made" line uses only top-quality steel from U.S. mills, forged into fittings and flanges at Weldbend's own plant in Argo, Illinois. For our other lines, we search worldwide for steel and/or forgings to maintain our high quality and our rate of production. Material Test Reports, which identify the source of the steel used, are always available, at no charge. We are proud to compare our fittings and flanges with any produced in the world.

All Weldbend sales are made solely in accordance with Weldbend's standard terms and conditions of sales, which are set forth in our catalog. Weldbend provides a catalog for the convenience of its customers in ordering Weldbend products.

WELDBEND We stand for value, quality, fair and equal pricing.

WELDBEND fittings conform to ASTM A234, ASME SA234, WPB specifications and to ASME/ANSI B16.9, B16.28 specifications.

WELDBEND flanges conform to ASTM A105, ASME SA105 and to ASME/ANSI B16.5, B16.47 specifications.

Prices are subject to change without notice

ADDITIONAL CHARGES:

- * ST-2/NAFTA Forms will incur a supplemental charge of \$65.36 USD for each product and/or code
- * Original Mill Test Report will incur a supplemental charge of \$261.44 USD for each item and/or code
- * Research/Verification of Heat codes will incur a supplemental charge of \$65.36 USD for each item and/or code