

Quality Products

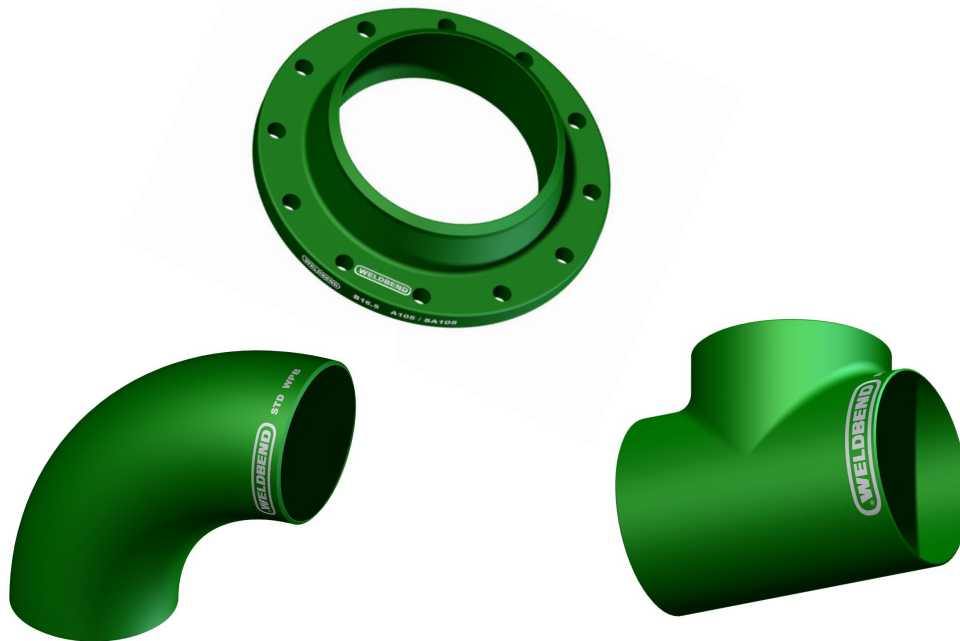
From



“The Industry Standard for Welding Fittings and Flanges”

1/2" THRU 60"

(CARBON STEEL ONLY)



LIST PRICE SCHEDULE No. 526



Weldbend Corporation
6600 South Harlem Ave.
Argo, Illinois 60501-1930

Effective May 1, 2026

PHONE: (708) 594-1700
FAX: (708) 458-0106
www.WELDBEND.com
e-mail: sales@weldbend.com



STANDARD - WELDING FITTINGS

Size	Elbows					180° Return Bends		Tees		Caps	Stub Ends
	Long Radius	Short Radius	3R-90°	45°	3R-45°	Long Radius	Short Radius	Straight	Reducing		
Catalog Page Reference	22	23		25		26	27	28	30-31	36	37
1/2"	\$ 27.72	\$	\$	\$ 28.90	\$	\$ 211.16	\$	\$ 84.05	\$	\$ 32.46	\$ 321.93
3/4"	27.72			28.90		211.16		84.05	179.01	32.46	321.93
1"	27.72	43.94		28.90		211.16		84.05	179.01	32.46	321.93
1 1/4"	27.72	43.94		28.90		211.16	303.99	84.05	179.01	32.46	321.93
1 1/2"	27.72	43.94		28.90		211.16	303.99	84.05	179.01	32.46	321.93
2"	30.67	46.00		28.90		211.16	303.99	72.84	121.50	44.07	321.93
2 1/2"	36.57	73.43	STOCK	35.09	STOCK	211.16	303.99	100.27	133.00	45.78	331.35
3"	44.83	86.11		36.57		241.79	304.63	111.47	129.76	45.78	331.35
3 1/2"	PRICE ON APPLICATION	PRICE ON APPLICATION	PRICE ON APPLICATION	PRICE ON APPLICATION	PRICE ON APPLICATION			PRICE ON APPLICATION	PRICE ON APPLICATION	PRICE ON APPLICATION	PRICE ON APPLICATION
4"	73.43	113.24		66.35		335.11	350.67	157.18	164.56	66.96	471.32
5"	158.07	335.89		99.68		1,010.52	1,005.80	258.33	355.65	103.86	471.32
6"	160.43	298.15	STOCK	129.46	STOCK	779.09	903.53	268.95	320.85	114.79	897.26
8"	303.75	493.96		215.57		1,793.86	2,080.41	469.78	610.74	172.87	1,116.55
10"	608.68	1,011.51	PRICE ON APPLICATION	430.56	PRICE ON APPLICATION	2,698.86	2,138.83	921.57	1,128.00	369.00	
12"	901.52	1,414.05		608.68			2,231.69	1,291.67	1,663.25	498.84	
14"	1,287.25	1,962.57		817.76				2,264.85	2,509.62	630.00	
16"	1,773.25	2,375.44	STOCK	1,466.25	STOCK			2,531.73	2,651.17	734.88	
18"	2,347.12	3,678.90		2,073.16				4,003.29	4,512.00	1,005.81	
20"	3,246.87	3,839.62	PRICE ON APPLICATION	2,146.00	PRICE ON APPLICATION			6,310.90	6,487.84	1,141.44	
24"	4,591.62	5,906.89		3,252.77				8,145.19	9,000.41	1,551.42	
30"											
36"											
42"	STOCK	STOCK		STOCK				STOCK	STOCK	STOCK	
48"								PRICE ON APPLICATION	PRICE ON APPLICATION	PRICE ON APPLICATION	
54"											
60"											

EXTRA STRONG - WELDING FITTINGS

Size	Elbows					180° Return Bends		Tees		Caps	Stub Ends
	Long Radius	Short Radius	3R-90°	45°	3R-45°	Long Radius	Short Radius	Straight	Reducing		
Catalog Page Reference	22	23		25		26	27	29	32-33	36	37
1/2"	\$ 36.27	\$	\$	\$ 38.34	\$	\$ 267.25	\$	\$ 69.30	\$	\$ 40.66	\$ 365.29
3/4"	36.27			38.34				69.30	181.36	40.66	365.29
1"	36.27	87.00		38.34		267.25		69.30	181.36	40.66	365.29
1 1/4"	36.27	87.00		38.34		267.25	331.54	69.30	181.36	40.66	365.29
1 1/2"	36.27	87.00		38.34		267.25	331.54	69.30	181.36	40.66	365.29
2"	36.57	129.76		38.34		300.65	373.82	79.03	113.54	44.07	365.29
2 1/2"	51.31	129.76	STOCK	85.23	STOCK	300.65	373.82	131.82	123.86	60.13	351.13
3"	66.35	129.76		49.84		436.91	496.29	122.38	142.44	66.96	402.98
3 1/2"	PRICE ON APPLICATION	PRICE ON APPLICATION	PRICE ON APPLICATION	PRICE ON APPLICATION	PRICE ON APPLICATION	PRICE ON APPLICATION	PRICE ON APPLICATION	PRICE ON APPLICATION	PRICE ON APPLICATION	PRICE ON APPLICATION	PRICE ON APPLICATION
4"	108.52	212.62		77.56		540.83	845.72	199.06	212.62	90.54	532.12
5"	258.33	476.27		184.61		1,270.97	1,494.75	494.55	626.67	148.96	1,315.19
6"	274.26	493.96	STOCK	212.92	STOCK	1,494.75	1,557.84	379.24	392.51	185.17	1,755.20
8"	521.98	1,057.22		367.74		2,940.69	3,645.91	724.57	781.49	277.76	
10"	1,098.51	1,592.47	PRICE ON APPLICATION	707.76	PRICE ON APPLICATION			3,888.48	1,119.15	1,353.60	426.72
12"	1,344.75	1,903.59		1,049.56				4,017.03	1,627.86	2,170.48	569.87
14"	1,863.78	2,741.11		1,325.88					3,090.57	3,327.97	865.73
16"	2,350.37	3,317.65	STOCK	1,613.11	STOCK				2,934.27	3,928.09	992.83
18"	3,077.30	4,330.64		2,422.03					6,198.84	6,119.22	1,343.01
20"	4,386.96	5,284.64	PRICE ON APPLICATION	2,882.67	PRICE ON APPLICATION				6,775.37	7,104.19	1,421.25
24"	7,138.40	8,089.16		4,837.87					9,121.32	8,886.87	2,023.92
30"											
36"											
42"	STOCK	STOCK		STOCK				STOCK	STOCK	STOCK	
48"								PRICE ON APPLICATION	PRICE ON APPLICATION	PRICE ON APPLICATION	
54"											
60"											

NOTE: PRICE SHEET 526

ALL PRICES ARE
BASED ON ORDERS
OF APPROXIMATELY
EQUAL AMOUNTS OF
FITTINGS AND FLANGES
PAGE 2



PHONE: (708) 594-1700
FAX: (708) 458-0106
www.WELDBEND.com
e-mail: sales@weldbend.com



WELDING REDUCERS

Size	STANDARD		EXTRA STRONG		XXS & SCH-160	
	Concentric	Eccentric	Concentric	Eccentric	Concentric	Eccentric
Catalog Page Reference	34	34	35	35		
3/4 x 1/2"	\$ 109.02	\$ 116.47	\$ 91.00	\$ 114.92	\$	\$
1 x 1/2"	85.81	142.87	95.35	141.32		
1 x 3/4"	82.93	125.79	81.68	138.21		
1 1/4 x 1/2"	97.84	98.53	160.57	92.64		
1 1/4 x 3/4"	82.93	119.58	84.17	116.47		
1 1/4 x 1"	82.93	119.58	95.04	111.81		
1 1/2 x 1/2"	130.76	195.67	129.20	187.91		
1 1/2 x 3/4"	82.93	172.38	108.08	170.82		
1 1/2 x 1"	89.45	119.58	70.19	103.43		
1 1/2 x 1 1/4"	89.45	119.58	79.82	134.48		
2 x 1/2"	336.47	469.04	342.70	702.11		
2 x 3/4"	100.94	279.53	144.42	518.68		
2 x 1"	65.53	97.84	66.16	126.41		
2 x 1 1/4"	47.21	97.84	63.67	145.98		
2 x 1 1/2"	47.21	60.56	52.80	66.78		
2 1/2 x 3/4"	600.17	837.60	563.05	854.14		
2 1/2 x 1"	122.37	349.41	156.85	357.18		
2 1/2 x 1 1/4"	103.12	149.08	110.26	159.95		
2 1/2 x 1 1/2"	76.72	82.62	71.75	100.01		
2 1/2 x 2"	59.32	70.50	71.75	100.01		
3 x 1"	120.51	392.89	149.70	456.56		
3 x 1 1/4"	95.35	338.54	119.58	377.36		
3 x 1 1/2"	60.56	94.11	81.06	136.66		
3 x 2"	52.80	82.62	60.56	82.62		
3 x 2 1/2"	49.07	77.03	60.56	82.62		
3 1/2 x 1 1/4"						
3 1/2 x 1 1/2"	STOCK	STOCK	STOCK	STOCK		
3 1/2 x 2"	PRICE ON APPLICATION	PRICE ON APPLICATION	PRICE ON APPLICATION	PRICE ON APPLICATION		
3 1/2 x 2 1/2"						
3 1/2 x 3"						
4 x 1"	201.03	829.21	247.39	1,092.94		
4 x 1 1/4"	201.03	829.21	247.39	1,092.94		
4 x 1 1/2"	138.21	409.98	148.77	660.00		
4 x 2"	76.72	122.68	101.56	177.04		
4 x 2 1/2"	76.72	105.60	91.00	134.48		
4 x 3"	62.74	100.32	77.65	128.89		
4 x 3 1/2"	PRICE ON APPLICATION	PRICE ON APPLICATION	PRICE ON APPLICATION	PRICE ON APPLICATION		
5 x 2"	242.26	750.07	594.78	1,400.75		
5 x 2 1/2"	242.26	316.80	285.74	413.08		
5 x 3"	159.95	203.44	240.71	372.71		
5 x 3 1/2"	PRICE ON APPLICATION	PRICE ON APPLICATION	PRICE ON APPLICATION	PRICE ON APPLICATION		
5 x 4"	116.47	203.44	165.23	298.16		
6 x 2"	342.58	714.35	495.39	924.00		
6 x 2 1/2"	316.80	557.51	582.35	666.21		
6 x 3"	159.33	324.56	217.41	361.84		
6 x 3 1/2"	PRICE ON APPLICATION	PRICE ON APPLICATION	PRICE ON APPLICATION	PRICE ON APPLICATION		
6 x 4"	132.00	206.54	186.35	279.53		
6 x 5"	118.02	149.08	180.14	343.20		
8 x 3"	483.90	819.95	796.66	1,031.15		
8 x 3 1/2"	PRICE ON APPLICATION	PRICE ON APPLICATION	PRICE ON APPLICATION	PRICE ON APPLICATION		
8 x 4"	222.07	481.41	309.04	546.64		

Size	STANDARD		EXTRA STRONG	
	Concentric	Eccentric	Concentric	Eccentric
Catalog Page Reference	34	34	35	35
8 x 5"	\$ 195.67	\$ 343.20	\$ 309.04	\$ 447.25
8 x 6"	172.69	264.00	253.13	392.89
10 x 4"	573.04	951.95	821.51	1,312.24
10 x 5"	459.67	728.33	600.99	1,040.47
10 x 6"	315.25	607.20	431.72	931.76
10 x 8"	334.50	346.31	361.84	636.71
12 x 4"	1,156.94	3,015.34	1,863.53	2,562.21
12 x 5"	1,369.49	2,343.30	2,016.87	2,410.25
12 x 6"	498.49	1,360.38	646.02	1,372.80
12 x 8"	476.13	843.25	600.99	1,180.24
12 x 10"	414.64	538.87	590.12	908.47
14 x 6"	1,804.40	2,681.55	3,435.86	3,922.28
14 x 8"	1,052.89	1,627.48	1,750.16	2,764.24
14 x 10"	852.56	1,105.69	947.29	2,205.18
14 x 12"	624.28	944.19	947.29	2,071.62
16 x 6"	3,127.61	5,160.48	5,824.43	12,916.34
16 x 8"	1,585.55	4,183.62	2,539.06	9,628.24
16 x 10"	1,205.08	2,102.68	1,931.86	2,826.35
16 x 12"	1,090.16	1,917.88	1,346.40	2,577.88
16 x 14"	1,090.16	1,444.24	1,327.76	2,018.82
18 x 8"	5,726.79	6,254.60	9,518.90	8,871.20
18 x 10"	1,942.73	3,216.14	3,296.89	5,357.65
18 x 12"	1,608.85	2,849.65	2,537.51	3,478.59
18 x 14"	1,484.61	2,686.59	2,251.76	1,999.11
18 x 16"	1,191.11	2,601.18	1,857.32	3,245.65
20 x 10"	3,487.91	11,363.36	3,612.14	15,434.66
20 x 12"	2,622.92	9,016.38	3,236.33	11,398.59
20 x 14"	2,127.53	7,367.15	2,810.82	8,385.88
20 x 16"	2,043.67	3,258.07	2,407.06	4,658.82
20 x 18"	2,043.67	3,267.39	2,469.18	3,494.12
24 x 10"	8,817.60	16,291.24	9,581.97	21,603.27
24 x 12"	5,311.06	14,473.44	8,162.26	16,206.85
24 x 14"	4,842.07	11,406.35	8,121.88	14,469.42
24 x 16"	2,466.07	7,112.47	6,832.94	10,870.59
24 x 18"	2,363.58	4,708.52	6,832.94	8,976.00
24 x 20"	2,310.78	4,286.12	6,211.76	7,609.41
30 x 16"	STOCK	STOCK	STOCK	STOCK
30 x 18"	STOCK	STOCK	STOCK	STOCK
30 x 20"	PRICE ON APPLICATION	PRICE ON APPLICATION	PRICE ON APPLICATION	PRICE ON APPLICATION
30 x 24"	PRICE ON APPLICATION	PRICE ON APPLICATION	PRICE ON APPLICATION	PRICE ON APPLICATION
36 x 18"	STOCK	STOCK	STOCK	STOCK
36 x 20"	STOCK	STOCK	STOCK	STOCK
36 x 24"	PRICE ON APPLICATION	PRICE ON APPLICATION	PRICE ON APPLICATION	PRICE ON APPLICATION
36 x 30"	PRICE ON APPLICATION	PRICE ON APPLICATION	PRICE ON APPLICATION	PRICE ON APPLICATION
42 x 24"	STOCK	STOCK	STOCK	STOCK
42 x 30"	STOCK	STOCK	STOCK	STOCK
42 x 36"	PRICE ON APPLICATION	PRICE ON APPLICATION	PRICE ON APPLICATION	PRICE ON APPLICATION
48 x 24"	STOCK	STOCK	STOCK	STOCK
48 x 30"	STOCK	STOCK	STOCK	STOCK
48 x 36"	STOCK	STOCK	STOCK	STOCK
48 x 42"	PRICE ON APPLICATION	PRICE ON APPLICATION	PRICE ON APPLICATION	PRICE ON APPLICATION

NOTE: PRICE SHEET 526
 ALL PRICES ARE
 BASED ON ORDERS
 OF APPROXIMATELY
 EQUAL AMOUNTS OF
 FITTINGS AND FLANGES
 PAGE 3



PHONE: (708) 594-1700
 FAX: (708) 458-0106
 www.WELDBEND.com
 e-mail: sales@weldbend.com



TRUE SCHEDULE - 80 - WELDING FITTINGS

Size	Elbows			Tees		Caps
	Long Radius	Short Radius	45°	Straight	Reducing	
	PRICE ON APPLICATION	PRICE ON APPLICATION	PRICE ON APPLICATION	PRICE ON APPLICATION	PRICE ON APPLICATION	
	\$	\$	\$	\$	\$	\$
10"	STOCK	STOCK	STOCK	STOCK	STOCK	
12"	STOCK	STOCK	STOCK	STOCK	STOCK	
14"	STOCK	STOCK	STOCK	STOCK	STOCK	
16"	STOCK	STOCK	STOCK	STOCK	STOCK	
18"	STOCK	STOCK	STOCK	STOCK	STOCK	
20"	STOCK	STOCK	STOCK	STOCK	STOCK	
24"	STOCK	STOCK	STOCK	STOCK	STOCK	

DOUBLE EXTRA STRONG & SCHEDULE 160 WELDING FITTINGS

Size	Tees-Straight		Tees-Reducing		Long Radius Elbows		Short Radius Elbows		45°		Caps	
	XXS	SCH-160	XXS	SCH-160	XXS	SCH-160	XXS	SCH-160	XXS	SCH-160	XXS	SCH-160
1/2"	\$	\$	\$	\$	\$	\$	\$	\$	\$	\$	\$	\$
3/4"												
1"			PRICE ON APPLICATION		PRICE ON APPLICATION		PRICE ON APPLICATION		PRICE ON APPLICATION		PRICE ON APPLICATION	
1 1/4"												
1 1/2"												
2"					271.87	215.00			239.09	202.94		
2 1/2"					309.95	266.08			279.09	239.09		
3"			PRICE ON APPLICATION		442.04	253.56	PRICE ON APPLICATION		409.73	222.89	PRICE ON APPLICATION	
4"					579.40	416.97			517.22	347.05		
5"					1,761.35	1,119.66			1,021.44	928.88		
6"					1,699.17	1,070.12			1,184.84	755.83		
8"												

Y52 STANDARD - WELDING FITTINGS

Size	Elbows					Tees		Reducers	
	Long Radius	Short Radius	3R-90°	45°	3R-45°	Straight	Reducing	Concentric	Eccentric
	PRICE ON APPLICATION	PRICE ON APPLICATION	PRICE ON APPLICATION	PRICE ON APPLICATION	PRICE ON APPLICATION	PRICE ON APPLICATION	PRICE ON APPLICATION	PRICE ON APPLICATION	
2"	\$ STOCK	\$ STOCK	\$ STOCK	\$ STOCK	\$ STOCK	\$ STOCK	\$ STOCK	\$ STOCK	\$ STOCK
2 1/2"	STOCK	STOCK	STOCK	STOCK	STOCK	STOCK	STOCK	STOCK	STOCK
3"	STOCK	STOCK	STOCK	STOCK	STOCK	STOCK	STOCK	STOCK	STOCK
4"	STOCK	STOCK	STOCK	STOCK	STOCK	STOCK	STOCK	STOCK	STOCK
5"	STOCK	STOCK	STOCK	STOCK	STOCK	STOCK	STOCK	STOCK	STOCK
6"	STOCK	STOCK	STOCK	STOCK	STOCK	STOCK	STOCK	STOCK	STOCK
8"	STOCK	STOCK	STOCK	STOCK	STOCK	STOCK	STOCK	STOCK	STOCK
10"	STOCK	STOCK	STOCK	STOCK	STOCK	STOCK	STOCK	STOCK	STOCK
12"	STOCK	STOCK	STOCK	STOCK	STOCK	STOCK	STOCK	STOCK	STOCK
14"	STOCK	STOCK	STOCK	STOCK	STOCK	STOCK	STOCK	STOCK	STOCK
16"	STOCK	STOCK	STOCK	STOCK	STOCK	STOCK	STOCK	STOCK	STOCK
18"	STOCK	STOCK	STOCK	STOCK	STOCK	STOCK	STOCK	STOCK	STOCK
20"	STOCK	STOCK	STOCK	STOCK	STOCK	STOCK	STOCK	STOCK	STOCK
24"	STOCK	STOCK	STOCK	STOCK	STOCK	STOCK	STOCK	STOCK	STOCK

NOTE: PRICE SHEET 526
 ALL PRICES ARE
 BASED ON ORDERS
 OF APPROXIMATELY
 EQUAL AMOUNTS OF
 FITTINGS AND FLANGES
 PAGE 4



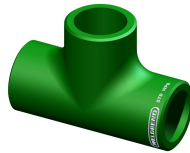
PHONE: (708) 594-1700
 FAX: (708) 458-0106
 www.WELDBEND.com
 e-mail: sales@weldbend.com



SEGMENTABLE SEGMENTS AVAILABLE ON 3R & LR ELBOWS

Size	11¼°	22½°	30°	45°	60°	
	\$	\$	\$	\$	\$	\$
10"	PRICE ON APPLICATION	PRICE ON APPLICATION	PRICE ON APPLICATION	PRICE ON APPLICATION	PRICE ON APPLICATION	
12"	*	*	*	*	*	
14"						
16"						
18"	PRICE ON APPLICATION	PRICE ON APPLICATION	PRICE ON APPLICATION	PRICE ON APPLICATION	PRICE ON APPLICATION	
20"	*	*	*	*	*	
24"						

* Denotes usual delivery time 1 to 2 weeks



BAR TEE SER - 4000 PRICE ON APPLICATION

CUSHION TEES

Size	STD	XS	XXS	SCH-160		
	PRICE ON APPLICATION	PRICE ON APPLICATION	PRICE ON APPLICATION	PRICE ON APPLICATION	PRICE ON APPLICATION	PRICE ON APPLICATION
	\$	\$	\$	\$	\$	\$
2"	STOCK	STOCK	STOCK	STOCK		
3"	STOCK	STOCK	STOCK	STOCK		
4"	STOCK	STOCK	STOCK	STOCK		
6"	STOCK	STOCK	STOCK	STOCK		
8"	STOCK	STOCK	STOCK	STOCK		

NOTE: PRICE SHEET 526
 ALL PRICES ARE
 BASED ON ORDERS
 OF APPROXIMATELY
 EQUAL AMOUNTS OF
 FITTINGS AND FLANGES
 PAGE 5



PHONE: (708) 594-1700
 FAX: (708) 458-0106
 www.WELDBEND.com
 e-mail: sales@weldbend.com



Y52 EXTRA STRONG - WELDING FITTINGS

Size	Elbows					Tees		Reducers	
	Long Radius	Short Radius	3R-90°	45°	3R-45°	Straight	Reducing	Concentric	Eccentric
	PRICE ON APPLICATION	PRICE ON APPLICATION	PRICE ON APPLICATION	PRICE ON APPLICATION	PRICE ON APPLICATION	PRICE ON APPLICATION	PRICE ON APPLICATION	PRICE ON APPLICATION	
2"	\$ STOCK	\$ STOCK	\$ STOCK	\$ STOCK	\$ STOCK	\$ STOCK	\$ STOCK	\$ STOCK	
2½"	STOCK	STOCK	STOCK	STOCK	STOCK	STOCK	STOCK	STOCK	
3"	STOCK	STOCK	STOCK	STOCK	STOCK	STOCK	STOCK	STOCK	
4"	STOCK	STOCK	STOCK	STOCK	STOCK	STOCK	STOCK	STOCK	
5"	STOCK	STOCK	STOCK	STOCK	STOCK	STOCK	STOCK	STOCK	
6"	STOCK	STOCK	STOCK	STOCK	STOCK	STOCK	STOCK	STOCK	
8"	STOCK	STOCK	STOCK	STOCK	STOCK	STOCK	STOCK	STOCK	
10"	STOCK	STOCK	STOCK	STOCK	STOCK	STOCK	STOCK	STOCK	
12"	STOCK	STOCK	STOCK	STOCK	STOCK	STOCK	STOCK	STOCK	
14"	STOCK	STOCK	STOCK	STOCK	STOCK	STOCK	STOCK	STOCK	
16"	STOCK	STOCK	STOCK	STOCK	STOCK	STOCK	STOCK	STOCK	
18"	STOCK	STOCK	STOCK	STOCK	STOCK	STOCK	STOCK	STOCK	
20"	STOCK	STOCK	STOCK	STOCK	STOCK	STOCK	STOCK	STOCK	
24"	STOCK	STOCK	STOCK	STOCK	STOCK	STOCK	STOCK	STOCK	

NOTE: PRICE SHEET 822



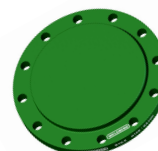
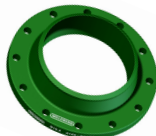
CLASS 150 FLANGES - RAISED OR FLAT FACE

Size	Slip-On		Welding-Neck		Blind	Threaded		Socket-Weld		Lap Joint
	Reducing		STD & XS	XXS & SCH-160		Reducing		STD & XS	XXS & SCH-160	
Catalog Page Reference	41		41		41	41/46				41
½"	\$ 44.37	\$	\$ 63.61	\$ 90.20	\$ 53.37	\$ 66.41	\$	\$ 58.32	\$ 72.42	\$ 46.53
¾"	44.37		63.61	90.20	53.37	66.41		58.32	72.42	46.53
1"	44.37	131.54	63.61	90.20	53.37	66.41	171.51	58.32	72.42	46.53
1¼"	44.37	131.54	63.61	90.20	53.37	66.41	171.51	58.32	72.42	46.53
1½"	44.37	131.54	63.61	90.20	53.37	66.41	171.51	58.32	72.42	46.53
2"	35.39	126.75	52.95	86.92	42.25	52.95	184.64	46.64	76.54	37.31
2½"	61.73	176.80	57.61	73.83	68.59	87.25	193.92	82.31	111.94	59.26
3"	50.99	133.99	65.93	108.97	58.59	65.30	175.14	57.89	101.24	51.52
3½"	PRICE ON APPLICATION		PRICE ON APPLICATION		PRICE ON APPLICATION	PRICE ON APPLICATION				PRICE ON APPLICATION
4"	62.60	143.55	79.27	207.08	75.91	76.27	185.68	76.27		62.55
5"	107.27	291.15	121.66	307.56	99.05	159.68	352.35	101.37		98.22
6"	98.50	389.80	115.53	411.86	115.53	178.33	423.71	165.71		104.25
8"	148.02	489.89	203.69		187.93	301.52	741.41	240.33		151.44
10"	259.09	619.29	327.29		361.60	548.43	886.97	312.13		259.27
12"	383.95	962.45	516.49		545.14	769.01	1,228.22	315.46		481.49
14"	489.42		753.03		853.24					650.87
16"	693.29		964.56		1,141.75					1,004.13
18"	882.57		1,261.10		1,552.29		ON APPLICATION	ON APPLICATION		1,332.04
20"	963.64		1,534.15		1,951.31					1,352.78
24"	1,415.21		2,055.76		2,613.05					1,898.63
*30" 0										
*36" 0	*STOCK		*STOCK		*STOCK					
*42" 0										
*48" 0	PRICE ON APPLICATION		PRICE ON APPLICATION		PRICE ON APPLICATION					
*54" 0			Series "A" "B"		Series "A" "B"					
*60" 0										

* Class 125 °Series A and B

NOTE: PRICE SHEET 526

ALL PRICES ARE
BASED ON ORDERS
OF APPROXIMATELY
EQUAL AMOUNTS OF
FITTINGS AND FLANGES
PAGE 6



PHONE: (708) 594-1700
FAX: (708) 458-0106
www.WELDBEND.com
e-mail: sales@weldbend.com



CLASS 300 FLANGES - RAISED OR FLAT FACE

Size	Slip-On		Welding-Neck		Blind	Threaded		Socket-Weld		Lap Joint
	Reducing		STD & XS	XXS & SCH-160		Reducing		STD & XS	XXS & SCH-160	
Catalog Page Reference	43		43		43	43/46				43
1/2"	\$ 59.59	\$	\$ 78.19	\$ 102.50	\$ 69.19	\$ 71.17	\$	\$ 65.19	\$ 76.38	\$ 56.95
3/4"	59.59		78.19	102.50	69.19	71.17		65.19	76.38	56.95
1"	59.59	235.74	78.19	102.50	69.19	71.17	253.17	65.19	76.38	56.95
1 1/4"	59.59	235.74	78.19	102.50	69.19	71.17	253.17	65.19	76.38	56.95
1 1/2"	59.59	235.74	78.19	102.50	69.19	71.17	253.17	65.19	76.38	56.95
2"	55.97	227.17	69.68	102.71	55.14	62.00	253.17	51.69	96.13	44.77
2 1/2"	63.10		79.56	99.79	98.50	114.41		66.60	61.81	84.28
3"	69.13	313.42	79.56	132.35	78.46	91.64	375.64	79.67	91.53	66.50
3 1/2"	PRICE ON APPLICATION		PRICE ON APPLICATION		PRICE ON APPLICATION		PRICE ON APPLICATION		PRICE ON APPLICATION	
4"	99.05		130.87	213.99	120.44	130.87		129.71	143.23	89.55
5"	167.35		203.57	223.35	217.84	133.21		182.09	189.76	184.18
6"	175.04		203.85	440.18	217.84	325.93			231.72	241.32
8"	293.28		351.17		338.00	351.19				404.28
10"	499.60		635.95		673.26	435.58		ON APPLICATION		512.98
12"	614.55		815.92		973.41	526.95				723.90
14"	1,447.21		1,508.84		1,717.89					
16"	1,446.94		1,786.37		2,296.33					
18"	1,799.87		2,275.60		2,896.17					
20"	1,994.76		2,757.91		3,435.45		ON APPLICATION			ON APPLICATION
24"	3,152.64		3,807.47		5,140.16					
30"			°STOCK		°STOCK					
36"										
42"										
48"			PRICE ON APPLICATION		PRICE ON APPLICATION					
54"			Series "A" "B"		Series "A" "B"					
60"										

°Series A and B

CLASS 600 FLANGES - RAISED OR FLAT FACE

Size	Slip-On		Welding-Neck		Blind	Threaded		Socket-Weld		Lap Joint
	Reducing		STD & XS	XXS & SCH-160		Reducing		STD & XS	XXS & SCH-160	
Catalog Page Reference	45		45		45	45/46				45
1/2"	\$ 87.20	\$	\$ 94.40	\$ 138.03	\$ 94.04	\$ 167.89	\$	\$ 134.67	\$ 154.09	\$ 150.52
3/4"	87.20		94.40	138.03	94.04	167.89		134.67	154.09	150.52
1"	87.20	107.59	94.40	138.03	94.04	167.89	118.11	134.67	154.09	150.52
1 1/4"	87.20	107.59	94.40	138.03	94.04	167.89	118.11	134.67	154.09	150.52
1 1/2"	87.20	107.59	94.40	138.03	94.04	167.89	118.11	134.67	154.09	150.52
2"	100.69		77.65	155.56	83.13	161.87		129.78	148.48	
2 1/2"	141.56		105.90	155.56	116.32	121.71		107.63	123.72	
3"	151.99		111.94	220.58	116.32	223.87		130.23	123.72	
3 1/2"	PRICE ON APPLICATION		PRICE ON APPLICATION		PRICE ON APPLICATION		PRICE ON APPLICATION		ON APPLICATION	
4"	300.14		201.17		206.32	325.60		213.36		
5"	255.51		174.06		402.85	326.30				
6"	683.14		400.56		510.85	350.93				
8"	908.00		755.29		794.80	600.61		ON APPLICATION		
10"	2,007.28		1,057.63		1,198.65	752.12				
12"	3,102.93		1,858.74		2,031.86	959.65				
14"										
16"										
18"	STOCK		STOCK		STOCK	ON APPLICATION		STOCK		ON APPLICATION
20"										
24"	PRICE ON APPLICATION		PRICE ON APPLICATION		PRICE ON APPLICATION			PRICE ON APPLICATION		
30"			°STOCK		°STOCK					
36"										
42"										
48"			PRICE ON APPLICATION		PRICE ON APPLICATION					
54"			Series "A" "B"		Series "A" "B"					
60"										

°Series A and B

NOTE: PRICE SHEET 526

ALL PRICES ARE
BASED ON ORDERS
OF APPROXIMATELY
EQUAL AMOUNTS OF
FITTINGS AND FLANGES
PAGE 7



PHONE: (708) 594-1700
FAX: (708) 458-0106
www.WELDBEND.com
e-mail: sales@weldbend.com



CLASS 600 FLANGES - OCTAGONAL RING TYPE- JOINT

Size	Slip-On	Welding-Neck			Blind	Threaded	Socket-Weld		Lap Joint
		STD & XS	SCH-80	XXS & SCH-160			STD & XS	XXS & SCH-160	
Catalog Page Reference									
2"		STOCK	STOCK	STOCK	STOCK				
2 1/2"		STOCK	STOCK	STOCK	STOCK				
3"		STOCK	STOCK	STOCK	STOCK				
4"		STOCK	STOCK	STOCK	STOCK				
5"		STOCK	STOCK	STOCK	STOCK				
6"		STOCK	STOCK	STOCK	STOCK				
8"		STOCK	STOCK	STOCK	STOCK				
10"		STOCK	STOCK	STOCK	STOCK				
12"		STOCK	STOCK	STOCK	STOCK				
14"		STOCK	STOCK	STOCK	STOCK				
16"		STOCK	STOCK	STOCK	STOCK				
18"		STOCK	STOCK	STOCK	STOCK				
20"		STOCK	STOCK	STOCK	STOCK				
24"		STOCK	STOCK	STOCK	STOCK				



CLASS 900 FLANGES - RAISED OR FLAT FACE

Size	Slip-On	Welding-Neck			Blind		Threaded	Socket-Weld		Lap Joint
		STD & XS	XXS & SCH-160	Ring Type Joint	RF	Ring Type Joint		STD & XS	XXS & SCH-160	
Catalog Page Reference										
*1/2"	\$ 248.04	\$ 150.92	\$ 193.97	\$ STOCK	\$ 248.04	\$ STOCK	\$ 282.62	\$ 273.91	\$ 386.11	PRICE ON APPLICATION
*3/4"	248.04	150.92	193.97	STOCK	248.04	STOCK	282.62	273.91	386.11	
*1"	248.04	150.92	193.97	STOCK	248.04	STOCK	282.62	273.91	386.11	
*1 1/4"	248.04	150.92	193.97	STOCK	248.04	STOCK	282.62	273.91	386.11	
*1 1/2"	248.04	150.92	193.97	STOCK	248.04	STOCK	282.62	273.91	386.11	
*2"	239.02	133.12	140.49	STOCK	239.02	STOCK	272.35	263.95	372.07	
*2 1/2"		390.24	390.24	STOCK	STOCK	STOCK				
3"		STOCK	STOCK	STOCK	STOCK	STOCK				
3 1/2"										
4"		STOCK	STOCK	STOCK	STOCK	STOCK				
5"										
6"		STOCK	STOCK	STOCK	STOCK	STOCK				
8"		STOCK	STOCK	STOCK	STOCK	STOCK				
10"		STOCK	STOCK	STOCK	STOCK	STOCK				
12"		STOCK	STOCK	STOCK	STOCK	STOCK				
14"		STOCK	STOCK	STOCK	STOCK	STOCK				
16"		STOCK	STOCK	STOCK	STOCK	STOCK				
18"		STOCK	STOCK	STOCK	STOCK	STOCK				
20"		STOCK	STOCK	STOCK	STOCK	STOCK				
24"		STOCK	STOCK	STOCK	STOCK	STOCK				

*Dimensions for these sizes same as class 1500

PHONE: (708) 594-1700
 FAX: (708) 458-0106
 www.WELDBEND.com
 e-mail: sales@weldbend.com

NOTE: PRICE SHEET 526
 ALL PRICES ARE
 BASED ON ORDERS
 OF APPROXIMATELY
 EQUAL AMOUNTS OF
 FITTINGS AND FLANGES
 PAGE 8



CLASS 1500 FLANGES - RAISED OR FLAT FACE

Size	Slip-On	Welding-Neck			Blind		Threaded	Socket-Weld		Lap Joint
		STD & XS	XXS & SCH-160	Ring Type Joint	RF	Ring Type Joint		STD & XS	XXS & SCH-160	
Catalog Page Reference										
1/2"	\$ 248.04	\$ 150.92	\$ 193.97	\$ STOCK	\$ 248.04	\$ STOCK	\$ 282.62	\$ 273.91	\$ 386.11	PRICE ON APPLICATION
3/4"	248.04	150.92	193.97	STOCK	248.04	STOCK	282.62	273.91	386.11	
1"	248.04	150.92	193.97	STOCK	248.04	STOCK	282.62	273.91	386.11	
1 1/4"	248.04	150.92	193.97	STOCK	248.04	STOCK	282.62	273.91	386.11	
1 1/2"	248.04	150.92	193.97	STOCK	248.04	STOCK	282.62	273.91	386.11	
2"	239.02	133.12	140.49	STOCK	239.02	STOCK	272.35	263.95	372.07	
2 1/2"		390.24	390.24	STOCK	STOCK	STOCK				
3"		STOCK	STOCK	STOCK	STOCK	STOCK				
3 1/2"										
4"		STOCK	STOCK	STOCK	STOCK	STOCK				
5"										
6"		STOCK	STOCK	STOCK	STOCK	STOCK				
8"		STOCK	STOCK	STOCK	STOCK	STOCK				
10"		STOCK	STOCK	STOCK	STOCK	STOCK				
12"		STOCK	STOCK	STOCK	STOCK	STOCK				
14"		STOCK	STOCK	STOCK	STOCK	STOCK				
16"		STOCK	STOCK	STOCK	STOCK	STOCK				
18"		STOCK	STOCK	STOCK	STOCK	STOCK				
20"		STOCK	STOCK	STOCK	STOCK	STOCK				
24"		STOCK	STOCK	STOCK	STOCK	STOCK				



CLASS 2500 FLANGES - RAISED OR FLAT FACE

Size	Slip-On	Welding-Neck			Blind		Threaded	Socket-Weld		Lap Joint
		STD & XS	XXS & SCH-160	Ring Type Joint	RF	Ring Type Joint		STD & XS	XXS & SCH-160	
Catalog Page Reference										
1/2"	\$ STOCK	\$ STOCK	\$ STOCK	\$ STOCK	\$ STOCK	\$ STOCK				
3/4"	STOCK	STOCK	STOCK	STOCK	STOCK	STOCK				
1"		STOCK	STOCK	STOCK						
1 1/4"										
1 1/2"										
2"		\$ STOCK	\$ STOCK	\$ STOCK	\$ STOCK	\$ STOCK				
2 1/2"		STOCK	STOCK	STOCK	STOCK	STOCK				
3"		STOCK	STOCK	STOCK	STOCK	STOCK				
3 1/2"										
4"		STOCK	STOCK	STOCK	STOCK	STOCK				
5"										
6"										
8"										
10"										
12"										

NOTE: PRICE SHEET 526

ALL PRICES ARE
BASED ON ORDERS
OF APPROXIMATELY
EQUAL AMOUNTS OF
FITTINGS AND FLANGES
PAGE 9



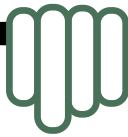
PHONE: (708) 594-1700
FAX: (708) 458-0106
www.WELDBEND.com
e-mail: sales@weldbend.com



WELDBEND



“Excellence in fittings and flanges”



Weldy says “Buy Quality Weldbend Carbon Steel Butt-Weld Fittings and Carbon Steel Flanges! We’re the BEST in the Industry!”

Priced WELDBEND Fittings conform to ASTM A234-WPB, ASME SA234-WPB specifications and to ASME/ANSI B16.9 and B16.28 specifications.

Priced WELDBEND Flanges conform to ASTM A105, ASME SA105 specifications and to ASME/ANSI B16.5 and B16.47 specifications.

Prices are subject to change without notice

ADDITIONAL CHARGES:

**ST-2/NAFTA Forms will incur a supplemental charge of \$100.00 USD for each product and/or code*

**Original Mill Test Report will incur a supplemental charge of \$400.00 USD for each item and/or code*

**Research Verification of a heat code will incur a supplemental charge of \$100.00 USD for each item and/or code*

**Orders specifying material to be provided without paint are subject to a supplemental charge*